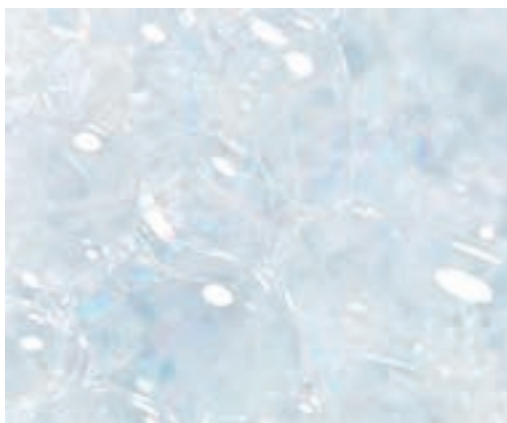




THE FRENCH TOUCH



THE FRENCH TOUCH

The French Touch is a state of mind. Rooted in French *savoir-vivre*, it reflects a desire to make each product unique. Particular attention is given to design to ensure the elegance, technicality, ergonomics and practicality which characterize French products. The importance given to reducing the ecological footprint is another of the core values of the French Touch.



If you are looking to give meaning, offer a warm welcome, surprise and enchant through your difference and good taste, this catalogue is a gold mine of new ideas, developed by the women and men of our teams in France to captivate your guests.

And if you are looking to give meaning whilst being more responsible, we have designed our products in an eco-responsible way, all the way through to transport, and including strong reforestation initiatives.

Meaning also signifies products which are easy to clean for the well-being of your teams: in developing sustainable accessories, we obviously considered their maintenance conditions.

You will discover products here but beyond that, we hope to enter into a dialogue with you. So please don't hesitate to call us or send us a message. Wherever you are in the world, we have someone nearby, and we are always here to talk and listen... Together, we can move forward.

Oh, and if you're wondering who the "we" of JVD actually are, we are a modestly sized team of people who share the same enthusiasm, know-how and taste for innovation. Each of the professionals at JVD and myself are proud to usher you into your perusal of this catalogue.

See you soon!

Thierry Launois
Managing Director

INNOVATION IN THE SERVICE OF WELL-BEING

The strength of JVD resides in our provision of accessories adorning hotel rooms around the world for more than 30 years. JVD accessories help to personalize hotel rooms, giving them the final touch to ensure guests' well-being. Accessories are what truly make a difference.

VALUES AND TALENT



SMART

Our products are designed to be used by anyone, from children to maintenance personnel to people with reduced mobility. Not only are they suited to their environments but they are also safe, practical and ergonomic.



**THE JVD GROUP
HAS OPERATIONS
AROUND THE
WORLD THANKS
TO LOCATIONS IN
EUROPE, ASIA AND
THE AMERICAS.**

JVD Americas

JVD France

JVD España

JVD China

JVD Asia

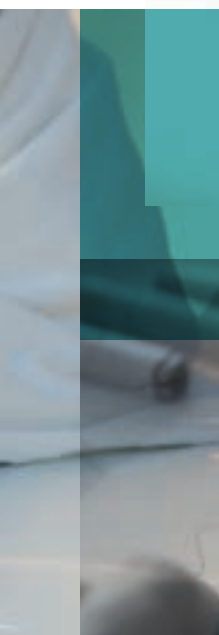


ECO-DESIGN

Beginning with the design phase, JVD products are made to minimize their impact on the planet. From packaging to power consumption, each detail is carefully conceived to preserve the environment.

RESPONSIBLE ENGINEERING

With paper and energy usage reduced as much as possible, fewer components and a low wattage required to switch them on, our products are eco-responsibly designed and produced.



SERVICE ORIENTATION

Customer satisfaction is part of JVD's DNA. And so our teams work hard to guarantee impeccable quality, short turnaround times and flawless customer service.



DESIGN

10 years ago, JVD created its own Design Department. Our teams devise products which embody the spirit of the French Touch.

RESEARCH & DEVELOPMENT

Managed internally by our R&D Centre, each of our products is designed in accordance with our ongoing strategy of pursuing innovative solutions. Elegance, design and ergonomics are the keys to a successful product.



OUR HISTORY

1984	1988	1991	1997	1999	2006	2007	2015	2018
Creation of JVD	JVD develops its first hand dryer and becomes a manufacturer	JVD develops its first hair dryer	JVD creates its own Engineering Department	Creation of JVD Asia subsidiary in Singapore	JVD creates its own integrated design service	Creation of JVD España subsidiary in Spain	Creation of JVD Americas in Mexico	Launch of HygiaConnect, the world's first connected hygiene platform

COMMITMENT TO RESPONSIBILITY

Eco-responsibility has been one of JVD's pillars from the very beginning. The company's commitment on this subject only grows stronger every day and now concerns each of its different levels. JVD is dedicated to the idea of transmission and makes it a point of honour to play an active role in an ecological transition which looks out for everyone's well-being.

BORN TO BE GREEN

You might think we're mad but, if our products lasted 20 years without you having to replace them, we would be thrilled! At JVD, we design quality products meant to withstand the test of time.

1

WORKING AND PRESERVING

We have always been convinced that the strategy of today should be to improve the future of tomorrow. All the teams at JVD strive actively to think of everything and to make a real difference. From design to manufacturing, transport to use and customer service to recycling, we know that each detail counts.



2

ECO-DESIGN

Whether we're talking about our next-gen jet air hand dryers which reduce energy consumption and eliminate the use of any consumables, our flow-reducing soap dispensers or our foaming soap which drops consumptions levels by four, our R&D Department endeavours to design our products to be eco-responsible.



3

RAW MATERIALS AND PARTNERS

Eco-responsibility also concerns our choice of raw materials and partners. Whenever possible, we prioritize partners located as close as possible to our production unit so as to reduce the environmental impact of our transport. For years, we have been striving to ensure that expertise endures and so encourage our suppliers' capacity for innovation. Out of concern for our social impact, we work with associations from the social and solidarity economy.



4

MANUFACTURING

All our waste is sorted and collected before being sent to a treatment and recycling centre. For example, we reuse our suppliers' cardboard boxes for our shipments, and we grind used paper and then use it as wedges for our shipped products. What about the rest? It is recycled or reused by other companies in the region!



5

LOGISTICS

Our packaging is designed with a twofold objective: to protect the integrity of the transported goods and to serve as an installation diagram. These simple, sensible optimizations further reduce our carbon footprint.



6

COMBATING PLANNED OBSOLESCENCE

At JVD, our products are designed and tested to be repairable and to repair them. Our appliances' spare parts are available for 10 years. Quality products meant to be used and to run for the long term.

**DID
YOU
KNOW?**



**MORE THAN
16,000
TREES PLANTED SINCE
JANUARY 2018**

GO TO PAGE 8 TO LEARN MORE ABOUT OUR INITIATIVE.

GOING EVEN FURTHER TOGETHER

PRESERVING IS GREAT, BUT REBUILDING IS EVEN BETTER!

Although we had always worked to preserve the environment and reduce our footprint as much as possible, it was time for us to move on to the next step and become a real actor for ecological restoration. We also wanted to help spread our values by engaging our clients in this shared outlook. This is why we reached out to the association Planète Urgence and established a partnership with them to fight deforestation in Indonesia.



16 000

THE NUMBER OF TREES PLANTED

SINCE WE LAUNCHED THE OPERATION,
1 HAND DRYER = 1 TREE.

A VERY SIMPLE MECHANISM

It couldn't be any simpler: for each hand dryer purchased from the Air range (Exp'air, Stell'air, Copt'air and Sup'air), a tree is planted!



INDONESIAN MANGROVES

Indonesia is home to the largest expanse of mangroves in the world, but it has been on the decline for decades and its gradual disappearance is hurting not only coastal species but also populations whose livelihoods come primarily from fishing. A whole ecosystem is in danger and needs to be protected.

CONTENTS

**DISCOVER OUR WIDE
RANGE OF PRODUCTS
SUITED TO YOUR
EVERY NEED, TO
FIT OUT YOUR
COMMON AREAS
REGARDLESS OF
YOUR CONSTRAINTS.**



P.13 > P.24

HAND DRYERS

P.25 > P.27

**SWIMMING POOL
HAIR DRYERS**

P.28 > P.34

**PAPER
DISPENSERS**

P.35 > P.40

**SOAP
DISPENSERS**

P.41 > P.43

**AIR
FRESHENERS**

P.44 > P.46

ACCESSORIES

P.47 > P.55

BINS

P.56 > P.60

ASHTRAYS

P.61 > P.65

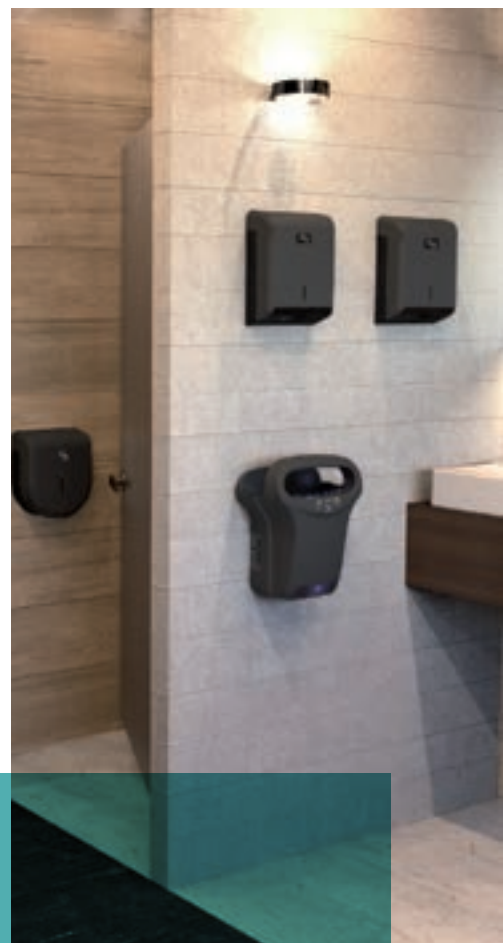
**FLYING INSECT
KILLERS**

RANGES

JVD offers a broad selection of equipment, lines and colours to adapt to your environment and make it unique. Thanks to our mastery of product design to production, JVD is the only manufacturer able to offer matching sets ranging from hand dryers to toilet roll dispensers by way of soap dispensers.

BLACK COLLECTION RANGE

Black has the virtue of endowing an object with a more qualitative value. Whatever the ambiance of the place, black products can fit in easily (and can be either discreet or highly visible). The matte aspect amplifies the qualitative side of the product and makes the solution less dirty and more scratch resistant. Ever in pursuit of solutions which can minimize our environmental impact, the black color has given us the opportunity to use recycled plastic.



METAL RANGE

The use of stainless steel and simple lines for this range gives it a robust appearance. Conversely, the opening for a more carefully worked view of the levels adds a touch of refinement to the design. The final solution is a perfect match for heavy traffic locations.

YALISS RANGE

The more pronounced character of the Yaliss range seeks to give your washrooms a new image between gentleness and liveliness. The products provide new responses to broader requirements: larger capacities, universal or removable cores and improved hygiene, whilst retaining all the qualities of the Cleanline range (ease of use, personalization, etc.). To date, this is the most complete range for fitting out your washrooms.



CLEANLINE RANGE METAL GREY

The metallic finish is essential, classic and highly valued. This range personalizes and enhances anywhere it is installed. It's truly the finishing touch! Rarely discreet, the use of light and sheen serves to underscore the careful design of the products.



CLEANLINE RANGE WHITE

The Cleanline range was designed to be both classic and timeless. Its rounded shapes and straight sides allow it to fit seamlessly and discreetly into any type of washroom. Its bevelled edges endow it with modernity and character. Its charcoal grey base seems to lighten up the volume. The range's success hinges on the possibility of personalizing the appliances with our clients' logos, as well as their simplicity and practicality.



KIDS RANGE

**SEE
P.12**

THE KIDS RANGE

The purpose of our Kids range is to help children to learn the basics of hygiene from a very young age. By making the experience of washing and drying their hands more enjoyable, JVD provides a comprehensive solution, suitable for environments visited by children. Thanks to our powerful yet quiet hand dryers, JVD also helps to keep washrooms clean, with no wet paper roll on the floor and no clogged pipes. By limiting their use of paper products, kids can also participate in the creation of a greener, more sustainable future by reducing the carbon footprint associated with using paper.



HAND DRYER *SUP'AIR*

REF 8 11 1056KIDS

Sup'air Kids



HAND DRYER *EXP'AIR*

REF 8 11 791KIDS

Exp'air Kids



A WORD FROM THE DESIGNER

The Kids range has long been a part of the JVD portfolio. What could be more obvious than to bring a little fun into areas where children spend time. Two ingredients are needed: colour and a sense of escape... No need to explain the choices: the kids get on board straight away if the spirit is cheerful! The world of the savannah is exotic and makes for a great way to inject a playful, entertaining spirit into a place. "Disguising" our products helps to forge a relationship with the object. Each child can now just enthusiastically ask for water from the sink, soap from the dispenser and air from the hand dryer... By adding an educational sign, you can push the concept of animals helping kids to wash their hands. The savannah is also a world which is conducive to creating new characters and so can continue to bring life into our washrooms in the future...

Jean-Guy de Russé

SOAP DISPENSERS

REF 8 44 478KIDS

Cleanline Foaming
Soap Dispenser Kids

REF 8 44 479KIDS

Cleanline Gel Soap
Dispenser Kids



Included in the Kids Pack:

Educational sign to guide children when washing their hands.
Elephant PVC sign to place behind the tap.



HAND DRYERS

HAND DRYERS

A hand dryer should not be chosen at random. Whether your constraints relate to usage, maintenance, noise or vandalism resistance, we have a large array of equipment suited to your environment.

VANDALISM RESISTANCE

In some places, special attention needs to be given to vandalism resistance. Standard NF EN 62262 provides a clear interpretation of this level of resistance with the IK index. IK10 is the highest level of resistance. A device of this type is able to tolerate at least a blow from a 5 kg sledgehammer. Devices with an aluminium or steel cover are even more resistant.

MAINTENANCE

Paper rolls require flawless logistics to prevent them from running out. Some hand dryers require no maintenance while others have a water recovery tray which needs to be emptied regularly and air filters which need to be replaced or cleaned periodically.

ECOLOGICAL FOOTPRINT

It takes 17 trees to produce one tonne of paper. Its manufacturing and transport then generate significant amounts of CO². For example, the French leader in paper consumables generates 30,000 tonnes of CO² annually, just to transport its paper within France. In this respect, hand dryers are the ideal solution for reducing your ecological footprint. Next-gen jet air hand dryers consume very little energy, and the absence of consumables renders the impact of transport anecdotal at best.

HOT OR COLD AIR

If the washroom in question has little to no heating, a cold sensation during hand drying can be unpleasant. And so we recommend opting for a hand dryer which uses evaporation or pulsed air with a heating element.

NOISE

The sound of a hand dryer can become a nuisance if located nearby an office or restaurant dining room. Most hot air hand dryers are relatively quiet. Some jet air hand dryers also manage to combine power with a low noise level.



USAGE LEVEL

A hand dryer should provide a solution which is compatible with the level of usage of the washroom. For places with little usage (< 50 visits daily), all three solutions are possible. For places with normal usage (50-250 visits daily), the cost of paper becomes prohibitive. For places with high usage (250-400 visits daily), jet air hand dryers are the only solution capable of guaranteeing cost control and a fast drying time. Lastly, for places with intensive usage (> 400 visits daily), the chosen hand dryer should have a brushless motor or an induction motor.



17 trees

needed to make one tonne of paper



IK10

A device of this type is able to tolerate at least a blow from a 5 kg sledgehammer

CHOOSING THE RIGHT HAND DRYER



	EXP'air	STELL'air	ALPHADRY	AIRWAVE	COPT'air	SUP'air	HURRICANE	MASTER	TORNADO	OURAGAN	ZEPHYR
ANTI-VANDALISM	☆☆☆ Aluminium cover	☆☆ IK10 ABS	☆☆ IK10 ABS	☆☆ IK10 ABS	☆☆☆☆ Aluminium cover	☆ IK9 ABS	☆☆☆☆ Steel cover	☆☆☆☆ Aluminium cover	☆☆ IK10 PC-ABS	☆☆☆☆ Steel cover	☆☆ IK10 PC-ABS
PEOPLE WITH REDUCED MOBILITY OR SMALL CHILDREN	☆☆☆☆				☆☆ Accessible height	☆☆ Accessible height	☆☆ Accessible height	☆☆ Accessible height	☆☆ Accessible height	☆☆ Accessible height	☆☆ Accessible height
DRYING TIME	☆☆☆ 10-15 sec	☆☆☆☆ 10-15 sec	☆☆☆☆ 10-15 sec	☆☆☆☆ 10-15 sec	☆☆☆☆ 10-15 sec	☆☆☆☆ 10-15 sec	☆☆☆☆ 10-15 sec	☆☆ 20-30 sec	☆☆ 20-30 sec	☆☆ 20-30 sec	☆☆ 20-30 sec
HOT AIR	No	No	Yes, activatable heating element	Yes, automatically activatable	Yes, in S version	No	Yes, heating element	Yes, heating element	Yes, heating element	Yes, heating element	Yes, heating element
USAGE	High (Exp'air Intensive (Exp'air+))	High	Intensive	High	High	High	High	Intensive	Intensive	Average	Average
NOISE LEVEL	☆☆ 75 dB	☆☆☆☆ 73 dB	☆ 78 dB	☆ 77 dB	☆ 80 dB	☆☆ 75 dB	☆ 80 dB	☆☆☆☆ 70 dB	☆☆☆☆ 70 dB	☆ 78 dB	☆☆☆☆ 69 dB
HYGIENE	☆☆☆☆ Copper filter Antibacterial Coating Water recovery tray	☆☆☆☆ Copper filter Antibacterial Coating Water recovery tray	☆☆☆☆ HEPA filter Water recovery tray	☆☆ Air filter Water recovery tray	☆☆ Antibacterial Filter (optional)	☆☆ Antibacterial Filter (optional)					
MAINTENANCE	☆☆ Clean filter & recovery tray	☆☆ Clean filter & recovery tray	☆☆ Clean filter & recovery tray	☆☆ Clean filter & recovery tray	☆☆☆☆ Clean filter (optional)	☆☆☆☆ Clean filter (optional)	☆☆☆☆ No specific maintenance	☆☆☆☆ No specific maintenance	☆☆☆☆ No specific maintenance	☆☆☆☆ No specific maintenance	☆☆☆☆ No specific maintenance
NET WEIGHT	7 kg	6 kg	10 kg	4.7 kg	4.3 kg	3.4 kg	5.8 kg	3.8 kg	3.2 kg	6.25 kg	1.8 kg
HEIGHT (mm)	430	531	685	685	285	292	280/287	290	302	280	244
WIDTH (mm)	340	340	300	300	232	215	200/205	265	265	255	213
DEPTH (mm)	234	260	220	220	194	193	180	149	149	140	204
CERTIFICATIONS	CE - IP44 - Class II	CE - IP44 - Class II	CE - IP24 - Class I	CE - IP24 - Class II	CE - IP24 - Class II	CE - IP24 - Class II	CE - IP21 - Class I	CE - IP23 - Class II	CE - IP23 - Class II	CE - IP21 - Class I	CE - IP23 - Class II

HAND DRYERS

EXP'AIR+ PULSED AIR

ECO
CONCEPTION



MADE
IN FRANCE



NEW

PRODUCT ADVANTAGES



Suitable for
intensive usage
(brushless motor)



Accessible by
people with
reduced mobility
and small children



Water recovery tray
with a capacity of
600 ml

CHARACTERISTICS

- Drying time: 10-15 seconds
- Noise level: 78 dB
- Rated power: 1200 W
- Power supply: 220-240 V - 50 Hz
- Class II - IP44 IK10
- Brushless motor
- 5 year warranty
- Dim.: 343 (L) x 430 (H) x 237 (D) mm



REF 8 11 1602
Exp'air+
Black



REF 8 11 1601
Exp'air+
Grey



REF 8 11 1600
Exp'air+
White

+ REF 5 90 2014
Bactericidal copper filter



HYGIENIC

INTEGRATED BACTERICIDAL COPPER FILTER AND
WATER TANK, ANTIBACTERIAL SURFACE TREATMENT



DIRECT DRAINAGE

CONNECTION TO SEWER
SYSTEM POSSIBLE VIA THE
DRAINAGE KIT (INCLUDED)



ANTI-VANDALISM

ALUMINIUM COVER



Scan me
to play the video

HAND DRYERS

EXP'AIR PULSED AIR

ECO CONCEPTION MADE IN FRANCE

PRODUCT ADVANTAGES

- **35%** more economical than competitors' models
- **50%** quieter than competitors' models
- **100%** accessible by people with reduced mobility and small children

CHARACTERISTICS

- Drying time: 10-15 seconds
- Usage: high
- Noise level: 75 dB
- Anti-vandalism: aluminium cover
- Illuminated drying zone
- Bactericidal copper filter included
- Water recovery tray with a capacity of 600 ml
- Rated power: 800 W
- Power supply: 230 V - 50 Hz
- CE - Class II - IP44
- 3 finishes: Black, White or Metal Grey
- **3 year warranty**
- Dim.: 343 (L) x 430 (H) x 237 (D) mm



REF 8 11 1376
Exp'air Automatic
Aluminium Epoxy
Black



REF 8 11 822
Exp'air Automatic
Aluminium Epoxy
Grey



REF 8 11 791
Exp'air Automatic
Aluminium Epoxy
White

PACK EXP'AIR KIDS

NEW ECO CONCEPTION MADE IN FRANCE

PRODUCT ADVANTAGES

- **35%** more economical than competitors' models
- **50%** quieter than competitors' models
- **100%** accessible by people with reduced mobility and small children

CHARACTERISTICS

- Drying time: 10-15 seconds
- Usage: high
- Noise level: 75 dB
- Anti-vandalism: aluminium cover
- Illuminated drying zone
- Bactericidal copper filter included
- Water recovery tray with a capacity of 600 ml
- Rated power: 800 W
- Power supply: 230 V - 50 Hz
- CE - Class II - IP44
- White finish
- **3 year warranty**
- Dim.: 343 (L) x 430 (H) x 237 (D) mm

THE EXP'AIR KIDS PACK INCLUDES:

- Exp'air Kids
- Cleanline Gel Kids (free)
- Elephant PVC Sign (free)
- Educational Sign (free)



REF 8 11 791KIDS
Exp'air Kids



REF 8 44 479KIDS
Cleanline Gel Kids
Included in the Kids Pack



Elephant PVC Sign* to
place behind the tap



Educational Sign* to
guide children when
washing and drying their
hands

* Included in the Kids Pack

HAND DRYERS

COPT'AIR PULSED AIR

ECO
CONCEPTION



MADE
IN FRANCE



NEW

PRODUCT ADVANTAGES



100 %

new drying
sensations with
a cyclonic effect



65 %

more economical
than competitors'
models



100 %

anti-vandalism:
aluminium cover

CHARACTERISTICS

- Drying time: 10-15 seconds
- Usage: high
- Noise level: 80 dB
- Anti-vandalism: IK10 aluminium cover
- Illuminated drying zone
- Optional antibacterial filter (not available for Copt'air S): 5 10 1899
- Hot air: automatic heating element in S version
- Rated power:
 - Copt'air Automatic: 500 W
 - Copt'air S Automatic: 1500 W
- Power supply: 220-240 V - 50 Hz
- CE - Class II - IP24
- 3 finishes: Black, White or Metal Grey
- **3 year warranty**
- Dim.: 232 (L) x 285 (H) x 194 (D) mm



Scan me
to play the video



REF 8 11 1377
Copt'air Automatic
Aluminium Black



REF 8 11 1168
Copt'air Automatic
Aluminium Metal Grey



REF 8 11 1167
Copt'air Automatic
Aluminium White

NEW



REF 8 11 1624
Copt'air S Automatic
Aluminium Black

REF 8 11 1623
Copt'air S Automatic
Aluminium Metal Grey

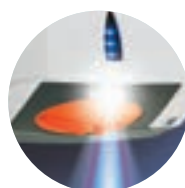
REF 8 11 1622
Copt'air S Automatic
Aluminium White



INNOVATION
ROTATING NOZZLE FOR
INCREASED EFFICIENCY AND
NEW SENSATIONS



ANTI-VANDALISM
ALUMINIUM COVER



ERGONOMIC
ILLUMINATED DRYING ZONE
WITH SWEEPING PULSED AIR

HAND DRYERS

SUP'AIR PULSED AIR

ECO
CONCEPTION

MADE
IN FRANCE

PRODUCT ADVANTAGES

- Ultra-fast drying
- Very low energy consumption
- Compact
- Excellent quality-price ratio
- Can easily replace an existing hand dryer

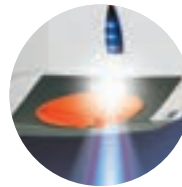
CHARACTERISTICS

- Drying time: 10-15 seconds
- Usage: high
- Noise level: 75 dB
- Anti-vandalism: IK9 ABS cover
- Illuminated drying zone
- Antibacterial filter (optional)
- Rated power: 500 W
- Power supply: 220-240 V - 50 Hz
- CE - Class II - IP24
- 2 finishes: White or Metal Grey
- 3 year warranty
- Dim.: 232 (L) x 285 (H) x 194 (D) mm



REF 8 11 1057
Sup'air Automatic
Aluminium Metal
Grey

REF 8 11 1056
Sup'air Automatic
White



ILLUMINATION
OF THE DRYING ZONE

+ REF 5 30 1899
Antibacterial Filter



Scan me
to play the video

PACK SUP'AIR KIDS

NEW

ECO
CONCEPTION

MADE
IN FRANCE

PRODUCT ADVANTAGES

- Ultra-fast drying
- Very low energy consumption
- Compact
- Excellent quality-price ratio
- Can easily replace an existing hand dryer

CHARACTERISTICS

- Drying time: 10-15 seconds
- Usage: high
- Noise level: 75 dB
- Anti-vandalism: IK9 ABS cover
- Illuminated drying zone
- Antibacterial filter (optional)
- Rated power: 500 W
- Power supply: 220-240 V - 50 Hz
- CE - Class II - IP24
- 1 finish: White
- 3 year warranty
- Dim.: 232 (L) x 285 (H) x 194 (D) mm

THE SUP'AIR KIDS PACK INCLUDES:

- Sup'air Kids
- Cleanline Gel Kids (free)
- Elephant PVC Sign (free)
- Educational Sign (free)



REF 8 11 1056KIDS
Sup'air Kids



REF 8 44 479KIDS
Cleanline Gel Kids
Included in the Kids Pack



Elephant PVC Sign* to
place behind the tap



Educational Sign* to guide
children when washing
and drying their hands

* Included in the Kids Pack

HAND DRYERS

STELL'AIR PULSED AIR

ECO
CONCEPTION



MADE
IN FRANCE



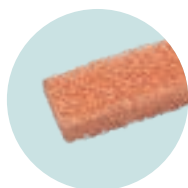
REF 8 11 963
Stell'air Automatic
Aluminium Metal Grey



REF 8 11 962
Stell'air Automatic
White

+ REF 5 90 2014

Bactericidal
Copper Filter



HYGIENIC

INTEGRATED BACTERICIDAL COPPER FILTER
AND WATER TANK, ANTIBACTERIAL SURFACE
TREATMENT

+ REF 5 30 1719

Drainage Kit



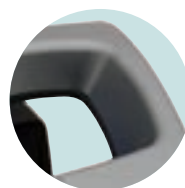
ERGONOMIC

LARGE OPENING AND
ILLUMINATED DRYING
ZONE



ANTI-VANDALISM

ULTRA-STURDY ABS



PRODUCT ADVANTAGES



35 %

more economical
than competitors'
models



73 dB

makes it the
quietest on the
market



100 %

ergonomic with its
wide opening and
illumination

CHARACTERISTICS

- Drying time: 10-15 seconds
- Usage: high
- Noise level: 73 dB
- Anti-vandalism: IK10 ABS cover
- Illuminated drying zone
- Bactericidal copper filter included
- Water recovery tray with a capacity of 1 L
- Rated power: 800 W
- Power supply: 220-240 V - 50 Hz
- CE - Class II - IP44
- 2 finishes: White or Metal Grey
- 3 year warranty
- Dim.: 340 (L) x 531 (H) x 220 (D) mm



Scan me to play
the video

HAND DRYERS

ALPHADRY PULSED AIR



REF 8 11 905
Alphadry Automatic
White

REF 8 11 906
Alphadry Automatic
Metal Grey

+ REF 5 10 2010
Alphadry HEPA Filter



PRODUCT ADVANTAGES

- Suitable for intensive usage
- Activatable heating element
- Water recovery tray

CHARACTERISTICS

- Drying time: 10-15 seconds
- Usage: intensive (brushless motor)
- Noise level: 80 dB
- Anti-vandalism: IK10 ABS
- HEPA air filter included
- 800 ml water recovery tray
- Rated power: 2050 W (1050 W without heating element)
- Power supply: 220-240 V - 50 Hz
- CE - Class I - IP21
- 2 finishes: White or Metal Grey
- **3 year warranty**
- Dim.: 300 (L) x 685 (H) x 220 (D) mm

AIRWAVE PULSED AIR



REF 8 11 707
Airwave Automatic
White

REF 8 11 684
Airwave Automatic
Metal Grey

PRODUCT ADVANTAGES

- Ultra-fast drying
- Automatically activatable heating element
- Water recovery tray

CHARACTERISTICS

- Drying time: 15-20 seconds
- Usage: high
- Hot air: automatically activatable heating element
- Noise level: 77 dB
- Anti-vandalism: IK10 ABS
- Air filter included
- 600 ml water recovery tray
- Rated power: 1400 W (600 W without heating element)
- Power supply: 220-240 V - 50 Hz
- CE - Class II - IP24
- 2 finishes: White or Metal Grey
- **2 year warranty**
- Dim.: 250 (L) x 470 (H) x 160 (D) mm

HURRICANE PULSED AIR



REF 8 11 614
Hurricane Automatic
White

PRODUCT ADVANTAGES

- Ultra-fast drying
- Heating element
- Steel cover

CHARACTERISTICS

- Drying time: 10-15 seconds
- Usage: high
- Hot air: heating element
- Noise level: 80 dB
- Anti-vandalism: steel cover
- Illuminated drying zone
- Rated power: 1600 W (1340 W without heating element)
- Power supply: 220-240 V - 50 Hz
- CE - Class I - IP21
- Finish: White
- **2 year warranty**
- Dim. (white): 205 (L) x 287 (H) x 180 (D) mm

HAND DRYERS

TORNADE HOT AIR



PRODUCT ADVANTAGES

- Hot air
- Suitable for intensive usage
- Quiet (70 dB)
- Can easily replace an existing hand dryer

CHARACTERISTICS

- Drying time: 20-30 seconds
- Usage: intensive (induction motor)
- Noise level: 70 dB
- Anti-vandalism: IK10 ABS
- Rated power: 2600 W
- Power supply: 220-240 V - 50 Hz
- CE - Class II - IP23
- 3 finishes: White, Composite White or Chrome
- 3 year warranty
- Dim.: 265 (L) x 302 (H) x 149 (D) mm



REF 8 11 292
Tornado Automatic
Chrome



REF 8 11 251 / 8 11 252
Tornado Automatic ABS
or Composite White



ILLUMINATION
OF THE DRYING ZONE

MASTER HOT AIR



PRODUCT ADVANTAGES

- Hot air
- Suitable for intensive usage
- Quiet (70 dB)
- Anti-vandalism (aluminium cover)
- Can easily replace an existing hand dryer

CHARACTERISTICS

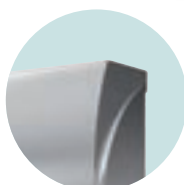
- Drying time: 20-30 seconds
- Usage: intensive (induction motor)
- Noise level: 70 dB
- Anti-vandalism: aluminium
- Rated power: 2600 W
- Power supply: 220-240 V - 50 Hz
- CE - Class II - IP23
- 2 finishes: Brushed Chrome or White
- 3 year warranty
- Dim.: 265 (L) x 265 (H) x 130 (D) mm



REF 8 11 414
Master Automatic
Brushed Chrome



REF 8 11 413
Master Automatic Epoxy
White



ANTI-VANDALISM
ALUMINIUM COVER



ILLUMINATION
OF THE DRYING ZONE

OURAGAN HOT AIR

PRODUCT ADVANTAGES

- Hot air
- Nozzle pivots 360°
- Anti-vandalism (steel cover)
- Can easily replace an existing hand dryer

CHARACTERISTICS

- Drying time: 20-30 seconds
- Usage: average
- Noise level: 78 dB
- Anti-vandalism: pressed steel
- Rated power: 2600 W
- Power supply: 220-240 V - 50 Hz
- CE - Class I - IP21
- 3 finishes: Manual White, White or Chrome
- 2 year warranty
- Dim.: 265 (L) x 240 (H) x 200 (D) mm



REF 8 11 378
Ouragan Automatic
Chrome



REF 8 11 341
Ouragan Automatic White

REF 8 11 342
Ouragan Manual White



ANTI-VANDALISM
STEEL COVER

HAND DRYERS

ZEPHYR HOT AIR

MADE
IN FRANCE



A WORD FROM THE DESIGNER

"A colourful finish is now essential, classic and highly valued. This new range personalizes and enhances any place where it is installed. It's truly the finishing touch! Rarely discreet, the use of light and sheen serves to underscore the careful design of the products."

Jean-Guy de Russé



REF 8 11 1403
Zephyr Automatic
Red



REF 8 11 1400
Zephyr Automatic
Black



REF 8 11 1462
Zephyr Automatic
Neon Green



REF 8 11 1401
Zephyr Automatic
White



REF 8 11 1404
Zephyr Automatic
Light Blue



REF 8 11 1402
Zephyr Automatic
Blue

PRODUCT ADVANTAGES



Personalizable with
our clients' names



Cost-effective



Anti-vandalism



6
Colour choices

CHARACTERISTICS

- Drying time: 20-30 seconds
- Usage: average
- Noise level: 69 dB
- Illuminated drying zone
- Rated power: 2100 W
- Anti-vandalism: IK10 ABS cover
- Power supply: 220-240 V - 50 Hz
- CE - Class II - IP23
- 3 year warranty
- Dim.: 214 (L) x 243 (H) x 194 (D) mm

HAND DRYERS

INTEGRATED SOLUTIONS

For more than 30 years now, we have been imagining and building built-in solutions to meet complex technical constraints. Backed by our expertise in hand dryers, particularly for railway applications, we can scale any form of solution for our clients around blown air: drying for industrial parts, space heaters, use in severe, restricted or confined environments, and so on. Our mastery of simulations of systems' air flow behaviours allows us to very quickly reach perfectly effective, personalized solutions.

Olivier de Barbeyrac
Technical Manager



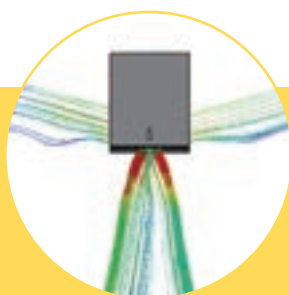
EXPERTISE

Having dealt with the most varied constraints over more than 30 years, we put our know-how at your disposal to provide you with fast responses and effective solutions.



DESIGN & ERGONOMICS

Between design, efficiency and footprint limitations, you undoubtedly have multiple expectations. We can take all those demands into account to devise a completely personalized solution for you.



Fluid mechanics

PUSHING THE LIMITS OF INNOVATION

- Space constraints
- Aesthetic constraints
- Normative constraints
- Acoustical constraints
- Meteorological constraints
- User behavioural constraints



BESPOKE DEVELOPMENT & PRODUCTION

Our R&D Department designs and develops each bespoke built-in system for some of the most complex and difficult environments: railway, industry, communities, high altitude, etc. Based at the same site in Nantes, our R&D and manufacturing teams work closely together to ensure flexibility and agility in the development and implementation of our clients' projects.

A high-contrast, black and white photograph of two people swimming in a pool. The water is splashing, creating a dynamic and energetic scene. The lighting is dramatic, with bright highlights on the water's surface and deep shadows. The overall mood is one of active leisure and refreshment.

HAIR DRYERS **FOR POOLS & GROUPS**

COMMUNAL HAIR DRYERS

Whether installed at a swimming pool, a gym or a spa, our hair dryers will adapt to any environment.

GUARANTEED QUIET

At just 70 dB, the Neptune hair dryer is fitted with an extremely efficient, smart motor. It is so quiet that its presence may even be forgotten, wherever you install it.

ERGONOMIC USE

When they are optimized to adapt to all ages thanks to their adjustable height and 180° rotation, hair dryers become much easier to use.



Rethink your users' comfort by offering them the only communal hair dryer that moves for you!

“ The Neptune guarantees the "wow" factor amongst our users! The adjustable height and above all the 180° rotation make for a highly innovative concept. Aesthetically pleasing and much quieter than the competitors, it is also very convenient for cleaning. With nearly 300,000 visitors annually, we needed equipment which would be fast and easy to install and maintain. The on/off switch is a real plus, because it allows us to isolate the hair dryers, one by one. Pleasant to use and easy to maintain: we've received nothing but positive feedback. ”

Serge Lucas
Water Complex Director
Town of Cesson-Sévigné



ROBUSTNESS

Corrosion resistant in chlorinated atmospheres, fitted with an IK10 ABS cover and an induction motor to handle intensive use: choosing Neptune also means opting for performance.



DID YOU KNOW?

The choice of name for our new hair dryer was no matter of chance. *Favet Neptunus Eunti* is the motto of the city of Nantes. The Latin phrase means "Neptune favours those who dare" or "May Neptune favour the traveller". Created by our own Engineering Department, our hair dryers are made in France, in Nantes!

COMMUNAL HAIR DRYERS

NEPTUNE

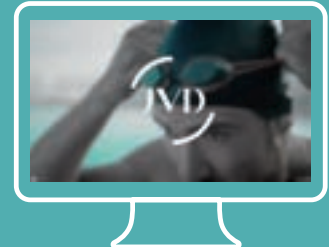


**LET'S
MOVE!**

MADE
IN FRANCE



**DISCOVER
NEPTUNE
IN VIDEO**



PRODUCT ADVANTAGES

- Adjustable height
- 180° rotation
- Quiet (70 dB)
- Longevity (induction motor)
- Corrosion resistant in chlorinated atmospheres
- On/off button to simplify maintenance

CHARACTERISTICS

- Usage: intensive (induction motor)
- Noise level: 70 dB
- Anti-vandalism: IK10 ABS cover
- Rated power: 2000 W
- Power supply: 220-240 V - 50 Hz
- CE - Class II - IP23
- **3 year warranty**
- Dim. (support): 138 (L) x 1153 (H) x 148 (D) mm
- Dim. (hair dryer) 150 (L) x 348 (H) x 384 (D) mm



REF 8 22 1405
Neptune Hair Dryer
White



REF 8 22 1406
Neptune Hair
Dryer Blue



REF 8 22 1407
Neptune Hair
Dryer Red

DRAGON

MADE
IN FRANCE



PRODUCT ADVANTAGES

- Quiet (70 dB)
- Longevity (induction motor)
- Corrosion resistant in chlorinated atmospheres

CHARACTERISTICS

- Usage: high
- Noise level: 70 dB
- Anti-vandalism: IK10 ABS cover
- Dust filter
- Rated power: 2100 W
- Power supply: 220-240 V - 50 Hz
- CE - Class II - IP23
- **3 year warranty**
- Dim.: 255 (L) x 280 (H) x 140 (D) mm



REF 8 22 009
Dragon

PAPER **DISPENSERS**



PAPER DISPENSERS

With their optimized design and ergonomics, our paper dispensers are conceived and developed to be easy to use and to maintain.



DISPOSABLE PAPER

Disposable paper rolls without cores are compatible with centre pull devices.



Disposable paper rolls with cores are compatible with auto cut devices. They come in the form of spools of different diameters and different lengths. Please note that some spools are only compatible with proprietary solutions.



PAPER TOWEL FORMATS

Disposable folded paper is compatible with zig-zag devices. They are classified according to how the sheets are folded:

Interleaved paper: W or Z

Zig zag paper: V

Folder paper: C



NEW

JUMBO MOBILE SUPPORT

Perfectly suited to JVD products and easy to install, it allows users to place their mobile phones on top without risk.

REF 8 99 1625
Mobile Holder for
Jumbo 400



Brushed 304 stainless steel.
Compatible with Cleanline Jumbo
200-400 and Yaliss Jumbo 400.
Dim.: 99 (L) x 190 (D) x 144 (H) mm

2 POSSIBLE SOLUTIONS

Two solutions coexist on the market today. For proprietary solutions, the equipment is usually free or sold at a reduced price. The equipment then only works with that brand's consumables which tend to be more expensive. Conversely, the open solutions from JVD's product range are invoiced in the beginning but allow you to use any brand of consumable (including brands which offer proprietary equipment).

CLEANLINE RANGE PAPER DISPENSERS

THE BENEFITS OF THE CLEANLINE RANGE



MADE IN FRANCE

Our products are backed by JVD's 30 years of experience and are 100% designed and manufactured in France.



SECURE LOCK

The Cleanline range is fitted with a removable key. A permanent key is also available (optional).



EASY TO CHANGE OUT CONSUMABLES

The Cleanline range is compatible with most consumables on the market, their levels are always visible, and they are easy to access.



PERSONALIZABLE

The Cleanline range is completely personalizable and can bear the client's brand name or logo.

CLEANLINE JUMBO 200-400 DISPENSERS



REF 8 99 1380
Cleanline Jumbo 200 Toilet
Roll Dispenser Black Cover



REF 8 99 734
Cleanline Jumbo 200 Toilet
Roll Dispenser Metal Grey
Cover



REF 8 99 602
Cleanline Jumbo 200 Toilet
Roll Dispenser White Cover

REF 8 99 1381
Cleanline Jumbo 400 Toilet
Roll Dispenser Black Cover

REF 8 99 735
Cleanline Jumbo 400 Toilet
Roll Dispenser Metal Grey
Cover

REF 8 99 603
Cleanline Jumbo 400 Toilet
Roll Dispenser White Cover

REF 8 99 1625
Mobile Holder for
Jumbo 400

NEW

PRODUCT ADVANTAGES

- Easy to tear right or left thanks to chiselled blades

CHARACTERISTICS

- ABS cover - Grey ABS frame
- Capacity: 200 / 400 m roll
- Core: Ø 45 mm
- Paper level indicator
- 4 mounting points
- Dim. (200): 245 (L) x 275 (H) x 120 (D) mm
- Dim. (400): 285 (L) x 320 (H) x 120 (D) mm
- Optional:**
- Possibility of installing a fixed key only for the Cleanline White range (2 10 1697)
- Adjustable cores for the Jumbo 400: 60 mm (2 10 1439) or 50 mm (2 10 1412)

CLEANLINE MAXI / MINI TP DISPENSERS



REF 8 99 607
Cleanline Maxi Toilet
Paper Dispenser White
Cover



REF 8 99 608
Cleanline Mini Toilet
Paper Dispenser
White Cover

PRODUCT ADVANTAGES

- Level indicator

CHARACTERISTICS

- White ABS cover - Grey ABS frame
- Capacity:
Cleanline Mini toilet paper: 2 packets (8 99 608)
Cleanline Maxi toilet paper: 4 packets (8 99 607)
- 4 mounting points
- Dim. (Mini): 137 (L) x 145 (H) x 122 (D) mm
- Dim. (Maxi): 145 (L) x 275 (H) x 135 (D) mm
- Optional:**
- Possibility of installing a fixed key (2 10 1697)

CLEANLINE RANGE PAPER DISPENSERS



CLEANLINE ZIG-ZAG DISPENSER

MADE
IN FRANCE



REF 8 99 1382
Cleanline Zig-zag
Dispenser Black
Cover

REF 8 99 733
Cleanline Zig-zag
Dispenser Metal Grey
Cover



REF 8 99 604
Cleanline Zig-zag
Dispenser White Cover



CHARACTERISTICS

- ABS cover - Grey ABS frame
- Capacity: 400-600 paper towels
- Max dimensions:
Max width: 245 mm
Depth: 110 mm
- Paper level indicator
- 4 mounting points
- Dim.: 265 (L) x 340 (H) x 110 (D) mm
- Optional:**
- Possibility of installing a fixed key
(2 10 1697)

CLEANLINE MAXI CENTRE PULL DISPENSER

MADE
IN FRANCE



REF 8 99 1383
Cleanline Maxi Centre Pull
Dispenser Black

REF 8 99 736
Cleanline Maxi Centre
Pull Dispenser Metal
Grey Cover



REF 8 99 605
Cleanline Maxi Centre
Pull Dispenser White
Cover



REF 8 99 737
Cleanline Maxi Centre
Pull Dispenser
Smoked Transparent
Cover

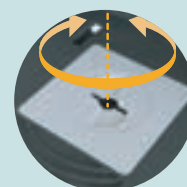


PRODUCT ADVANTAGES

- Adjustable tightness to
slow dispensing

CHARACTERISTICS

- ABS cover - Grey ABS frame
- Capacity: 450 format (spool: Ø 205 mm)
- 4 mounting points
- Dim.: 220 (L) x 310 (H) x 220 (D) mm
- Optional:**
- Possibility of installing a fixed key
(2 10 1697)



ECONOMICAL
ADJUSTABLE TIGHTNESS

CLÉ FIXE

REF 2 10 1697
Cleanline Fixed Key



OPTIONAL

- Exclusive for the Cleanline range
- Permanent key to affix to the device
- Prevents the problem of lost keys

CLEANTECH AUTOMATIC PAPER DISPENSER

MADE
IN FRANCE



REF 8 99 845
Cleantech White

PRODUCT ADVANTAGES

- Optimized hygiene:
no contact with the device
- Easy tear
paper
- Antistatic roll to prevent
jams

CHARACTERISTICS

- White ABS cover - Grey ABS frame
- Capacity:
Maximum diameter: 216 mm
Maximum width: 210 mm
- Adjustable core diameter:
38-51 mm
- Weight: 3 kg
- Dim.: 309 (L) x 398 (H) x 252 (D) mm

CLEANLINE MINI CENTRE PULL DISPENSER



REF 8 99 606
Cleanline Mini Centre Pull
Dispenser White Cover

CHARACTERISTICS

- White ABS cover - Grey ABS frame
- Capacity: 200 format
(spool: Ø 130 mm)
- 4 mounting points
- Dim.: 145 (L) x 275 (H) x 135 (D) mm
- Optional:**
- Possibility of installing a fixed key
(2 10 1697)

YALISS RANGE PAPER DISPENSERS

THE BENEFITS OF THE YALISS RANGE



MADE IN FRANCE

Our products are backed by JVD's 30 years of experience and are 100% designed and manufactured in France.



EASY TO WORK WITH

The Yaliss range was specially designed to be easy to install and maintain.



SUITABLE FOR LARGE FORMATS

Our products were designed to adapt to any size of paper, including large formats.



PERSONALIZABLE

The Yaliss range is completely personalizable and can bear the client's brand name, logo or even colours.

YALISS JUMBO 400 DISPENSER



PRODUCT ADVANTAGES

- Anti-vandalism: impact resistant PC
- ABS cover (IK10)
- Secure lock with key
- Practical: easy to change out consumables
- Easy to tear right or left thanks to chiselled blades

CHARACTERISTICS

- Material:
8 99 955: ABS
8 99 1288: PC-ABS
- Capacity: 1 roll: 400 m - Ø 295 mm max
- Universal core
- Paper level indicator
- 4 mounting points
- Dim.: 310 (L) x 334 (H) x 123 (D) mm



+ REF 8 99 1288
Yaliss Jumbo 400
Dispenser IK10 White

NEW

+ REF 8 99 1625
Mobile Holder for
Jumbo 400

REF 8 99 955
Yaliss Jumbo 400
Dispenser White



ERGONOMIC
EASY TO TEAR RIGHT OR
LEFT THANKS TO CHISELLED
BLADES



UNIVERSAL
UNIVERSAL CORE



ANTI-VANDALISM
IK10 IMPACT RESISTANT PC-ABS
COVER (REF. 8 99 1288)

YALISS RANGE PAPER DISPENSERS

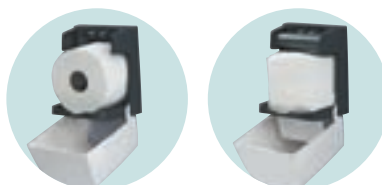


YALISS MINI MIXED TP DISPENSER

MADE
IN FRANCE 



REF 8 99 954
Yaliss Mini Mixed
Toilet Paper
Dispenser



UNIVERSAL
REMOVABLE CORE
FOR ROLL OR SHEET BY
SHEET FORMAT

PRODUCT ADVANTAGES

- Suitable for large formats
- Removable core
- Secure lock with key
- Practical: easy to change out consumables

CHARACTERISTICS

- ABS cover - Grey ABS frame
- Capacity: 1 roll - Ø 130 mm max
2 packets, 150 mm high
- Paper level indicator
- 3 mounting points
- Dim.: 155 (L) x 177 (H) x 135 (D) mm

YALISS ZIG-ZAG DISPENSER

MADE
IN FRANCE 



REF 8 99 880
Yaliss Zig-zag
Dispenser White

PRODUCT ADVANTAGES

- Suitable for large paper towel formats
- Secure lock with key
- Practical: easy to change out consumables

CHARACTERISTICS

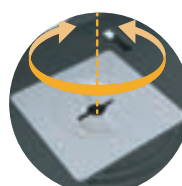
- White ABS cover - Grey ABS frame
- Capacity: 400-700 sheets
- Max dimensions:
- Max width: 255 mm - Depth: 125 mm
- Paper level indicator
- 4 mounting points
- Dim.: 280 (L) x 350 (H) x 133 (D) mm

YALISS MAXI CENTRE PULL DISPENSER

MADE
IN FRANCE 



REF 8 99 956
Yaliss Maxi Centre Pull
Dispenser White



ECONOMICAL
ADJUSTABLE TIGHTNESS

PRODUCT ADVANTAGES

- Adjustable tightness to slow dispensing
- Suitable for spools with large diameters
- Secure lock with key
- Practical: easy to change out consumables

CHARACTERISTICS

- ABS cover - Grey ABS frame
- Capacity: 450 format (spool: Ø 230 mm)
- Paper level indicator
- 4 mounting points
- Dim.: 260 (L) x 305 (H) x 240 (D) mm

METAL RANGE PAPER DISPENSERS

THE BENEFITS OF THE METAL RANGE



ANTI-VANDALISM

Steel anti-vandalism cover and frame.



EASY TO WORK WITH

Easy to refill, clean and maintain.



SECURE

Secure lock with key.



PRACTICAL

Consumables level indicator.

ESSUIE-MAINS METAL



REF 8 99 617
Metal Paper
Towel Dispenser
White



REF 8 99 797
Paper Towel
Dispenser
Brushed
Stainless Steel

CHARACTERISTICS

- Capacity: 400-700 paper towels
- Max dimensions:
Max width: 245 mm
Depth: 120 mm
- Consumables level indicator at the front
- 4 mounting points
- 2 finishes: White Epoxy or Brushed Stainless Steel
- Dim.: 240 (L) x 400 (H) x 123 (D) mm

PH MIXTE METAL



REF 8 99 621
Metal Mixed Toilet Paper
Dispenser
White



REF 8 99 622
Mixed Toilet Paper
Dispenser
Brushed Stainless Steel

CHARACTERISTICS

- Secure lock with key
- Capacity: 1 roll or 2 packets of folded paper
- 3 mounting points
- 2 finishes: White Epoxy or Brushed Stainless Steel
- Dim.: 134 (L) x 137 (H) x 120 (D) mm

JUMBO METAL



REF 8 99 439
Metal Jumbo 200
Dispenser White



REF 8 99 440
Metal Jumbo 400
Dispenser White

REF 8 99 1110
Metal Jumbo 200
Dispenser Brushed
Stainless Steel

REF 8 99 623
Metal Jumbo 400
Dispenser Brushed
Stainless Steel

PRODUCT ADVANTAGES

- Metal core delivered with adapter

CHARACTERISTICS

- Consumables level indicator at the front
- Capacity: 200 / 400 m spool
- Core: Ø 45 / 60 mm
- Easy to tear right or left
- 4 mounting points
- 2 finishes: White Epoxy or Brushed Stainless Steel
- Dim. (200): 246 (L) x 282 (H) x 120 (D) mm
- Dim. (400): 290 (L) x 326.5 (H) x 120 (D) mm

DISTRIBUTEURS SPOOL



REF 8 99 1169
Spool Support on
Stand



REF 8 99 1238
Wall-mounted
Spool Support

PRODUCT ADVANTAGES

- Easy to tear paper: plastic saw built into the cover and held in place by pressure from 2 side springs

CHARACTERISTICS

- Tubular metal structure (Ø 20 mm): White Epoxy finish
- Green ABS cover
- Capacity: 1 spool of industrial paper
- Dim. (on stand): 530 (L) x 910 (H) x 405 (D) mm
- Dim. (wall-mounted): 360 (L) x 360 (H) x 405 (D) mm

A black and white photograph of two men in white lab coats standing at a sink. The man in the foreground is washing his hands under a running faucet. The man behind him is also washing his hands. The background is blurred, showing a laboratory or clinical setting. A teal-colored rectangular block is visible on the right side of the image.

SOAP **DISPENSERS**

SOAP DISPENSERS

AUTOMATIC SOAP DISPENSERS

Automatic soap dispensers are becoming increasingly common in washrooms. They are more hygienic as no contact with the device is required. They can also be more economical by limiting the flow.

SOAP IN BULK OR A CARTRIDGE

Two solutions coexist on the professional soap dispenser market. Proprietary soap dispensers with cartridges need to be replaced whenever the cartridge is empty. Solutions with an integrated container make it possible to use bulk soap (from a container). This solution is more economical and more ecological (less packaging).

GEL OR FOAMING SOAP

Soap is available in two forms. Gel soap is the most common one on the market.

Soap also comes in a foaming version.

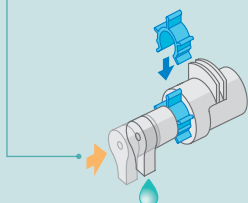
With a suitable dispenser, this solution can cut soap consumption by four and water consumption by 50%.



THE PUMP: A KEY COMPONENT OF THE DISPENSER

Inside the dispenser, the pump is the part which manages the delivery of the soap. A pump's performance can be measured based on two criteria: its capacity to limit the flow and its longevity.

ECONOMICAL
THE FLOW
REDUCER
CAN CUT THE
CONSUMPTION OF
GEL SOAP IN HALF



ECOLABEL IS A EUROPEAN ECOLOGICAL LABEL

Based on the principle of a "global approach" which "considers the product's life cycle from the extraction of raw materials to manufacturing, distribution and use, all the way to its recycling or disposal after use". Quality and uses are also taken into account.



1/4

A foaming soap dispenser can cut consumption by up to 4 times



CLEANLINE GEL or FOAM DISPENSERS

ECO
CONCEPTION



MADE
IN FRANCE



REF 8 44 1378
Cleanline Foaming
Soap Dispenser
Matte Black Cover



REF 8 44 732
Cleanline Foaming
Soap Dispenser
Metal Grey Cover



REF 8 44 478
Cleanline Foaming
Soap Dispenser
White Cover

REF 8 44 1379
Cleanline Gel Soap
Dispenser Matte
Black Cover

REF 8 44 731
Cleanline Gel
Soap Dispenser
Metal Grey Cover

REF 8 44 479
Cleanline Gel
Soap Dispenser
White Cover

REF 8 44 1455
Cleanline Hydroalcoholic Gel
Soap Dispenser White Cover

PRODUCT ADVANTAGES

- Very sturdy
- Easy to refill consumables
- Choice of 3 colours
- 3 versions: gel, foam or hydroalcoholic gel

CHARACTERISTICS

- Capacity: 700 ml
 - Compatible with hydroalcoholic gel
 - Removable container for easier cleaning
 - Material: ABS
 - Flow: 1 ml or 0.5 ml per pump (gel)
 - Level indicator
 - Locks with a key
 - Meets HACCP requirements
 - 1 year warranty
 - Dim.: 110 (L) x 206 (H) x 106 (D) mm
- Optional:**
- Possibility of installing a fixed key (2 10 1697)



HYGIENIC
THE VERSION WITH
A PADDLE PREVENTS
CONTACT WITH THE
HANDS (REF. 8 44 972)



FOAM
FOAMING SOAP CAN
CUT CONSUMPTION
BY UP TO 4 TIMES



PRACTICAL
EASY TO REFILL
AND CLEAN THANKS
TO ITS REMOVABLE
CONTAINER

CLEANLINE KIDS

NEW

MADE
IN FRANCE



REF 8 44 478KIDS
Cleanline Foaming
Soap Dispenser Kids

REF 8 44 479KIDS
Cleanline Gel Soap
Dispenser Kids

PRODUCT ADVANTAGES

- The soap dispensing solution from the Kids range
- Very sturdy
- Easy to refill consumables
- 2 versions: gel or foam

CHARACTERISTICS

- Capacity: 700 ml
- Removable container for easier cleaning
- Material: ABS
- Flow: 1 ml or 0.5 ml per pump (gel)
- Locks with a key
- Meets HACCP requirements
- 1 year warranty
- Dim.: 110 (L) x 206 (H) x 106 (D) mm

YALISS RANGE SOAP DISPENSERS

YALISS SAVON AUTO GEL / FOAM DISPENSERS

DESIGNED
IN FRANCE



REF 8 44 1449
Yaliss Foaming
Soap Dispenser
White Cover

REF 8 44 1448
Yaliss Gel Soap Dispenser
White Cover



HYGIENIC
AUTOMATIC HAND
DETECTION



EASY
AUTOMATICALLY SHUTS
OFF WHEN THE COVER
IS OPENED AND A WIDE
OPENING FOR EASY REFILLS



FOAM OR GEL
THANKS TO
INTERCHANGEABLE PUMPS

PRODUCT ADVANTAGES

- Hygienic: automatic hand detection
- Suitable for medical and agrifood settings
- Easy to refill consumables
- 2 versions: gel or foam

CHARACTERISTICS

- Capacity: 1000 ml
- Automatically shuts off when the cover is opened
- Removable container for easier cleaning
- Large opening for level indicator
- Flow: 1 ml per dose (gel)
- Material: ABS
- Power supply: 4 LR14 (C, 1.5V) batteries (not included)
- Level indicator
- Locks with a key
- Meets HACCP requirements
- 2 year warranty
- Dim.: 158 (L) x 296 (H) x 106 (D) mm

FOAMING SOAP



REF 8 88 648
Foaming Soap 5 L
Container



REF 8 88 1657
Foaming Soap Lemon
5 L Container

PRODUCT ADVANTAGES

- Eco-friendly
- Economical
- Gentle on the hands

CHARACTERISTICS

- 8 88 648:**
- Made in the European Union: RS 37106/Z
 - pH: 6.0-6.5
 - Biodegradable and Ecolabel
 - Compliant with standards 73/404/EEC and 73/405/EEC

- 8 88 1657:**
- Made in France
 - 98.8% ingredients of natural origin
 - Ecocert
 - Compliant with standards 1223/2009 (EC) and ISO 11930

SOAP DISPENSERS

SAPHIR



REF 8 44 397
Saphir Soap Dispenser
White Cover



PRACTICAL
EASY TO REFILL

PRODUCT ADVANTAGES

- Automatic hand detection
- Large capacity (1,100 ml)
- Eco-friendly (flow limited to 1 ml every 3 seconds)

CHARACTERISTICS

- Automatically shuts off when the cover is opened
- Automatic hand detection
- Translucent level indicator
- Flow: 1 ml per dose
- Delivers up to 1 dose every 3 seconds
- Power supply: 4 LR6 (AA, 1.5V) batteries (not included)
- Locks with a key
- Meets HACCP requirements
- 1 year warranty
- Subject to eco-recycling
- Dim.: 140 (L) x 235 (H) x 107 (D) mm

SAVINOX



REF 8 44 254
Savinox 850 ml
Shiny Stainless
Steel



REF 8 44 304
Savinox 850
ml Brushed
Stainless Steel



REF 8 44 253
Savinox 450 ml
Shiny Stainless
Steel

PRODUCT ADVANTAGES

- Anti-vandalism
- Corrosion resistant 304 stainless steel
- Soap level indicator

CHARACTERISTICS

- Capacity: 450 / 850 ml
- 2 finishes:
Shiny 304 Stainless Steel (8 44 254 / 8 44 253)
Brushed 304 Stainless Steel (8 44 304)
- Reinforced mounting system
- Cover locks with a key
- Translucent level indicator
- Meets HACCP requirements
- 1 year warranty
- Dim. (450 ml): 90 (L) x 169 (H) x 115 (D) mm
- Dim. (850 ml): 105 (L) x 182 (H) x 115 (D) mm

ISSI



REF 8 44 772
Issi Soap Dispenser
Translucent



REF 8 44 773
Issi Soap Dispenser
White

PRODUCT ADVANTAGES

- Ecological & economical: reusable container
- Easy to refill
- Locks with a key (included)

CHARACTERISTICS

- Key locking system for container
- Capacity: 300 ml
- Material: ABS
- Flow: 1 ml per pump
- White or translucent finish
- Transparent container
- Meets HACCP requirements
- 1 year warranty
- Dim.: 75 (L) x 202 (H) x 58 (D) mm

SOAP DISPENSERS

RUBIS



REF 8 44 738
Rubis Soap Dispenser

PRODUCT ADVANTAGES

- Long-lasting pump (silicone)
- Personalizable name
- Locks with a key (included)

CHARACTERISTICS

- Compatible with hydroalcoholic gel
- Capacity: 800 ml
- Material: ABS
- Flow: 1 ml per pump
- Locks with a key
- Meets HACCP requirements
- 1 year warranty
- Dim.: 105 (L) x 207 (H) x 87 (D) mm

CRYSTAL



REF 8 44 102
Crystal Soap Dispenser 1000 ml Push Button



REF 8 44 098
Crystal Soap Dispenser 450 ml Push Button

REF 8 44 103
Crystal Soap Dispenser 1000 ml Paddle

REF 8 44 099
Crystal Soap Dispenser 450 ml Paddle



HYGIENIC
SUITABLE FOR
AGRI-FOOD SETTINGS

PRODUCT ADVANTAGES

- Long-lasting pump (silicone)
- 2 capacities: 450 or 1000 ml
- Push button or paddle

CHARACTERISTICS

- Compatible with hydroalcoholic gel
- Material: ABS
- Flow: 1 ml per pump
- Meets HACCP requirements
- 1 year warranty
- Dim. (450 ml): 110 (L) x 155 (H) x 99 (D) mm
- Dim. (1000 ml): 110 (L) x 245 (H) x 99 (D) mm

CLEANSEAT TOILET SEAT DISINFECTANT



REF 8 44 131
Cleanseat Disinfectant Dispenser 450 ml Push Button



+ REF 8 88 1656
Cleanseat Refill
(1 L bottle)



PRACTICAL
UNDERSTANDABLE
INSTRUCTIONS FOR
USE PRINTED ON THE
PRODUCT

PRODUCT ADVANTAGES

- Long-lasting pump (silicone)
- Used under category TP2
- Compliant with European standard EN 13697

CHARACTERISTICS

- Capacity: 450 ml (approx. 450 doses)
- Material: ABS
- Flow: 1 ml per pump
- Meets HACCP requirements
- 1 year warranty
- Dim.: 110 (L) x 155 (H) x 99 (D) mm

AIR FRESHENERS

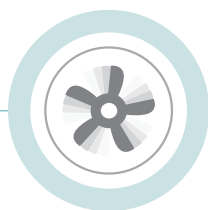


YALISS RANGE AIR FRESHENERS

YALISS FRAGRANCE



REF 8 33 959
Yaliss Air
Freshener



FAN
INTEGRATED SO THE
FRESHENER CAN BE
POSITIONED ANYWHERE
IN THE ROOM

PRODUCT ADVANTAGES



4 programme modes:
day/night or continuous,
2 ventilation speeds
(normal or fast)



1-2 months of
constant, lasting
diffusion



Eco-friendly, reduced
packaging, 100%
recyclable material,
gas free

CHARACTERISTICS

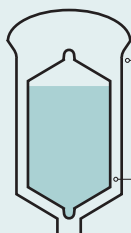
Air freshener:

- Material: polypropylene
- Continuous or day/night mode
- 2 speeds: normal or fast
- Power supply: 2 LR20 (D) batteries (not included)
- Locks with a key (included)
- 2 year warranty
- Dim.: 90 (L) x 200 (H) x 75 (D) mm

Refills:

- Compliant with IFRA standards
- Designed and manufactured in France

YALISS FRAGRANCE REFILL



An impermeable wall
for optimal conservation.
Simply press to release the
fragrance.

A microporous wall allowing for
the gradual, continuous diffusion of
fragrance.



PATENTED INNOVATION
PATENTED DOUBLE WALL CARTRIDGE



**Vent
d'Atlantide**

REF 8 88 1393

**Feuille
de figuier**

REF 8 88 1391



4 fragrances

CREATED AND MADE IN GRASSE
(FRANCE) BY A CRAFT PERFUMER



**Escale
à Bali**

REF 8 88 1392

**Cologne
verveine**

REF 8 88 1394



AIR FRESHENERS

AMARILLYS AIR FRESHENER



REF 8 33 522
Amarillys Air
Freshener



ECONOMICAL
WITH ITS DAY/NIGHT MODE

PRODUCT ADVANTAGES

- Economical (day/night mode, adjustable frequency)
- On/off indicator lights

CHARACTERISTICS

- 3 operating modes:
Day (works in the light)
Night (works in the dark)
24/7
- Programmable frequency of sprays:
7.5, 15 or 30 min
- Power supply: 2 LR14 (C, 1.5V) batteries (not included)
- Battery life: 30,000 sprays
- On/off indicator light
- Spray indicator light
- 2 year warranty
- Dim.: 95 (L) x 230 (H) x 95 (D) mm

AMARILLYS REFILLS

MADE
IN FRANCE



REF 8 88 1232
Neutralizing
Floral Spray



REF 8 88 1464
Purifying
Essential Oil Spray



REF 8 88 1236
Deodorant
Peach Spray



REF 8 88 1465
Fresh Wind
Spray



REF 8 88 1235
Deodorant
Berry Spray



REF 8 88 1237
Deodorant
Citrus Spray

PRODUCT ADVANTAGES

- Fragrances designed and manufactured in France
- IFRA compliant

CHARACTERISTICS

- Net volume: 250 ml for 3,000 sprays
- Dim.: 65 mm (Ø) x 130 mm (H)

ELIMINODOR

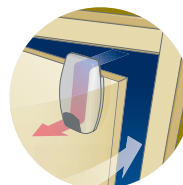
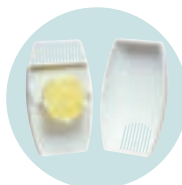
ECO
CONCEPTION MADE
IN FRANCE



REF 8 33 053
Eliminodor Odour
Inhibitor

+ REF 8 88 057
Eliminodor Refill
Lemon

REF 8 88 058
Eliminodor Refill
Chlorophyll



SIMPLE AND EFFECTIVE

ELIMINODOR WORKS ONLY VIA THE FLOW OF AIR
CAUSED BY MOVING THE DOOR TO WHICH IT IS
ATTACHED.

PRODUCT ADVANTAGES

- No motor, no gas, no electricity
- Diffuses the fragrance via the air flow generated by the door's movements
- Uses no energy

CHARACTERISTICS

- Material: polypropylene
- Dim.: 100 (L) x 155 (H) x 50 (D) mm



ACCESSORIES

CHANGING TABLES

GALET WALL-MOUNTED CHANGING TABLE



REF 8 99 1386
Galet Changing Table
Vertical Foldaway



REF 8 99 1385
Galet Changing Table
Horizontal Foldaway



+ REF 2 90 2175
Galet Changing Table
Strap

EASY
WASHABLE, REPLACEABLE
STRAP

PRODUCT ADVANTAGES

- Compliant with EN 12221
- Design specially created for the comfort of the child
- Opens slowly
- Incomparable hygiene (no stagnant residue)
- Antibacterial treatment

CHARACTERISTICS

- Mounting kit included
- Table comes with strap
- Made of high-density polypropylene with the antibacterial SteriTouch®
- Net weight: 9 Kg
- Dim. (vertical): 490 (L) x 780 (H) x 823 (D) mm
- Dim. (horizontal): 760 (L) x 600 (H) x 647 (D) mm

BABY CHANGING STATION



REF 8 99 1548
Changing Support Grey
+ Guardrail Grey



Guardrail Grey

COMES IN:



→ Please contact us
for other colours

COMES IN:



→ Please contact us
for other colours

PRODUCT ADVANTAGES

- Material specially designed for the comfort of the child
- Antibacterial treatment
- Choice of 5 colours

CHARACTERISTICS

- Solid polyurethane / latex polymer moulded mattress with UV stabilizer and SteriTouch® antibacterial
- 100% watertight "superskin"
- Fixed mount on an aluminium rail (included) built into the worktop
- Guardrail (optional)
- Dim.: 850 (L) x 575 (H) mm

DRAW SHEET DISPENSER



REF 8 99 1388
Draw Sheet Dispenser

+ REF 8 88 1389
Draw Sheet Roll 50 m

PRODUCT ADVANTAGES

- Comfort (fabric feel)
- Hygienic (water resistant)

CHARACTERISTICS

- Roll of draw sheets: paper combination of white silk and polyethylene sheets. Comes in a 50 m roll, producing about 130 draw sheets.

WASHROOM & BATHROOM ACCESSORIES

SUPPORT BARS

REF 8 99 1436
Angled Support Bar



REF 8 99 1437
Straight Support Bar



REF 8 99 1446
Straight Support Bar



CHARACTERISTICS

- Material: stainless steel
- Dim. (angled bar): 420 (L) x 265 (H) x 119 (D) mm
- Dim. (straight bar): Length: 400 or 500 mm

TOWEL RAILS

REF 8 99 1440
Single Towel Rail



REF 8 99 1441
Double Towel Rail



REF 8 99 1442
Towel Rack



CHARACTERISTICS

- Material: 304 stainless steel
- Dim. (single towel rail): 647 (L) x 80 (D) mm
- Dim. (double towel rail): 652 (L) x 130 (D) mm
- Dim. (towel rack): 647 (L) x 125 (H) x 245 (D) mm

HOOKS

REF 8 99 1438
Single Hook



REF 8 99 1439
Double Hook



CHARACTERISTICS

- Single hook:
- Material: 304 stainless steel
 - Dim.: 56 (L) x 60 (D) mm
- Double hook:
- Material: brass
 - Dim.: 87 (L) x 55 (D) mm

ECLIPS MIRRORS

REF 8 66 610
Eclips Illuminated
Square Black -
Tubular chrome
brass arm



REF 8 66 965
Eclips Illuminated
Square Black - Flat
chrome brass arm



PRODUCT ADVANTAGES

- No electrical connection required
- Magnification x3
- LED lighting

CHARACTERISTICS

- Runs on a standard (3.6 V) lithium battery (included)
- Activated by a sensory system
- Timer: 3 minutes
- Battery life: ~ 5 years
- Magnifying reflection x3
- Dim. (flat arm): 180 (L) x 195 (H) x 80/230 (D) mm
- Dim. (tubular arm): 180 (L) x 285 (H) x 65/330 (D) mm



TOILET ROLL DISPENSERS

REF 8 99 1443
Toilet Roll Dispenser



REF 8 99 1444
Toilet Roll Dispenser
with Reserve



REF 8 99 620
Metal Toilet Roll
Dispenser



REF 8 99 619
Metal Toilet
Roll Dispenser
White

CHARACTERISTICS

- Toilet roll dispenser:
- Material: 304 stainless steel
 - Dim.: 180 (L) x 90 (D) mm
- Toilet roll dispenser with reserve:
- Material: 304 stainless steel
 - Dim.: 175 (H) x 90 (D) mm
- Metal toilet roll dispenser:
- Material: brushed stainless steel or white epoxy
 - Dim.: 130 (L) x 104 (H) x 130 (D) mm

TOILET BRUSHES

REF 8 99 1063
Toilet Brush with
brushed stainless
steel wall support



REF 8 99 796
Toilet Brush with
brushed stainless
steel support



PRODUCT ADVANTAGES

- 304L stainless steel
- Non-slip plastic base protecting the floor

CHARACTERISTICS

- Install on floor or mount on wall
- Dim. (exterior): 104 (Ø) x 275 (H) mm
- Dim. (inner container): 85 (Ø) x 105 (H) mm



BINS

BINS

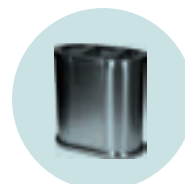
A BIN FOR EVERY SPACE



P. 49
Offices



P. 50
Washrooms



P. 52
Common areas



P. 55
Kitchens

WASTE SORTING

Sorting recyclable waste at the source has been an obligation since 1 July 2016 (French Decree 2016-288 of 10 March 2016 implementing the Energy Transition for Green Growth Act).



SORTING FLOWS OF PAPER, METAL, PLASTIC, GLASS AND WOOD IS COMPULSORY

For whom?
For companies, shops and administrations which entrust their waste to a private company or which generate more than 1,100 litres of waste per week and which use a public waste collection service.



SORTING OFFICE PAPER AT THE SOURCE IS COMPULSORY.

1 JULY 2016

For organizations with 100 or more administrative jobs

1 JANUARY 2017

For organizations with 50 or more administrative jobs

1 JANUARY 2018

For organizations with 20 or more administrative jobs

SORTING BIN WITH 2 CONTAINERS



REF 8 99 1229
Round Recycling Bin

NEW

10 LITRES

SORTING BIN

13 LITRES

PRODUCT ADVANTAGES

- 10 L capacity
- Rubber protection at base
- Water and rust resistant inner containers

CHARACTERISTICS

- Material: painted metal or stainless steel
- Capacity: 10 L
- 2 compartments of 5 L each

Dimensions and capacity:
- Round:
225 (Ø) x 270 (H) mm / 10 L



REF 8 99 1086
Sorting Bin Black with 3 Coloured Containers

REF 8 99 881
Sorting Bin Black with 3 Black Containers

REF 8 99 1031
Sorting Bin Brushed Stainless Steel with 3 Black Containers



PRODUCT ADVANTAGES

- Unique design for sorting small waste
- 6 stickers included
- Easy to empty thanks to integrated handles

CHARACTERISTICS

- Rubber protection at the base to prevent scratching the floor
- Capacity: 3 x 3.3 L
- Outer colours: Black or Brushed Stainless Steel
- Removable containers (black or colours)
- Dim.: 245 (Ø) x 300 (H) mm

SORTING BIN WITH 2 CONTAINERS



REF 8 99 1261
Rectangular Sorting Bin with 2 Containers

14 LITRES

PRODUCT ADVANTAGES

- Easy to empty (2 containers)
- Robust (steel outer container)

CHARACTERISTICS

- Outer containers of epoxy steel
- Inner containers of polypropylene

Dimensions and capacity:
- Rectangular:
270 (L) x 290 (H) x 210 (D) mm / 14 L

BIN + SORTING CONTAINER

6 / 25 LITRES



REF 8 99 1422
Bin 25 L Blue

REF 8 99 1496
Sorting Container 6 L

- Tight 6 L container for waste and 25 L container for paper

RECTANGULAR BIN

6.6 / 13.2 LITRES



REF 8 99 1420
Rectangular Bin 6.6 L

REF 8 99 1421
Rectangular Bin 13.2 L

CHARACTERISTICS

- Material: plastic
- Scratch resistant and easy to clean

WASTE BIN

10 LITRES



REF 8 99 545
Perforated Bin
10 L Mirror Stainless Steel



REF 8 99 1007
Waste Bin
10 L Double Wall Satin Stainless Steel



REF 8 99 546
Waste Bin
10 L Double Wall Black Powder Coated Finish



REF 8 99 1087
Waste Bin
10 L Single Wall Black Leatherette Finish



REF 8 99 1088
Waste Bin
10 L Single Wall Leather

PRODUCT ADVANTAGES

- Contemporary design

CHARACTERISTICS

Perforated bin:

- Can be used as a laundry bin
- Rubber protection at the base to prevent scratching the floor
- Colour: Mirror Stainless Steel
- Dim.: 200 (Ø) x 297 (H) mm

Waste bin:

- Double wall system to conceal the bag and hold it in place
- Colours: Black, Satin Stainless Steel, Leatherette
- Available with double walls for the Black and Satin Stainless Steel models
- Dim.: 225 (Ø) x 275 (H) mm

WASHROOM BINS

HALF-MOON WALL-MOUNTED BIN

20 / 40 LITRES

PRODUCT ADVANTAGES

- Easy to mount
- Easy to empty
- Non-cutting edge
- Wall mount included

CHARACTERISTICS

- Material: painted epoxy steel
- Choice of 2 colours: Black or White
- Dim. (20 L): 350 (L) x 190 (D) x 495 (H) mm
- Dim. (40 L): 400 (L) x 210 (D) x 660 (H) mm



REF 8 99 1418
Half-moon Wall-mounted Bin 20 L Black

REF 8 99 1416
Half-moon Wall-mounted Bin 20 L White

REF 8 99 1419
Half-moon Wall-mounted Bin 40 L Black

REF 8 99 1417
Half-moon Wall-mounted Bin 40 L White

WALL-MOUNTED BIN

40 LITRES

PRODUCT ADVANTAGES

- Easy to install with the wall mounting system
- Wall mount included

CHARACTERISTICS

- Bin material: polypropylene
- Wall mount material: epoxy
- Capacity: 40 L
- Dim. (container): 450 (L) x 610 (H) x 370 (D) mm
- Dim. (lid): 455 (L) x 175 (H) x 330 (D) mm



REF 8 99 1450
Wall-mounted Bin 40 L White



EASY
TO INSTALL WITH THE WALL
MOUNTING SYSTEM

WASHROOM BINS

ROUND PEDAL BIN

3 / 5 / 12 / 20 / 30 LITRES



REF 8 99 432
Pedal Bin 3 L
White

REF 8 99 433
Pedal Bin 5 L
White

REF 8 99 434
Pedal Bin 12 L
White

REF 8 99 820
Pedal Bin 20 L
White

REF 8 99 997
Pedal Bin 30 L
White



REF 8 99 435
Pedal Bin 3 L
Mirror Stainless
Steel

REF 8 99 436
Pedal Bin 5 L
Mirror Stainless
Steel

REF 8 99 437
Pedal Bin 12 L
Mirror Stainless
Steel

REF 8 99 821
Pedal Bin 20 L
Mirror Stainless
Steel

REF 8 99 998
Pedal Bin 30 L
Mirror Stainless
Steel



PRACTICAL
PLASTIC CONTAINER MAKES
IT EASY TO CLEAN

PRODUCT ADVANTAGES

- Plastic inner container
- Smooth material, very easy to clean
- Wide range of capacities 3-30 L

CHARACTERISTICS

- Material:
 - Metal exterior
 - Plastic inner container
- Rubber protection at the base against scratching the floor and detergents
- Increased mobility thanks to its handle
- Robust opening mechanism:
 - 100% metal
- Floor grip reinforced by two rubber pads
- Colours: White or Mirror Stainless Steel (18/0)
- Dim. (3 L): 167 (Ø) x 270 (H) mm
- Dim. (5 L): 203 (Ø) x 284 (H) mm
- Dim. (12 L): 284 (Ø) x 400 (H) mm
- Dim. (20 L): 292 (Ø) x 445 (H) mm
- Dim. (30 L): 292 (Ø) x 640 (H) mm

SWING TOP

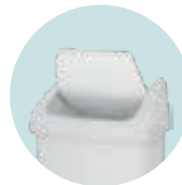
10 / 25 / 50 LITRES



REF 8 99 1085
Swing Top 50 L White

REF 8 99 1084
Swing Top 25 L White

REF 8 99 1083
Swing Top 10 L White



PRACTICAL
SWING TOP

PRODUCT ADVANTAGES

- Suitable for any indoor location
- Good price-quality ratio
- Swing top
- Easy to empty

CHARACTERISTICS

- Material: polypropylene
- Capacity: 0.8, 25 and 50 L:
- Colours: White
- Dim. (10 L): 246 (L) x 373 (H) x 198 (D) mm
- Dim. (25 L): 346 (L) x 511 (H) x 278 (D) mm
- Dim. (50 L): 406 (L) x 668 (H) x 340 (D) mm

LADYBOX



REF 8 99 865
Ladybox



HYGIENIC
OPENS WITH A FOOT PEDAL

PRODUCT ADVANTAGES

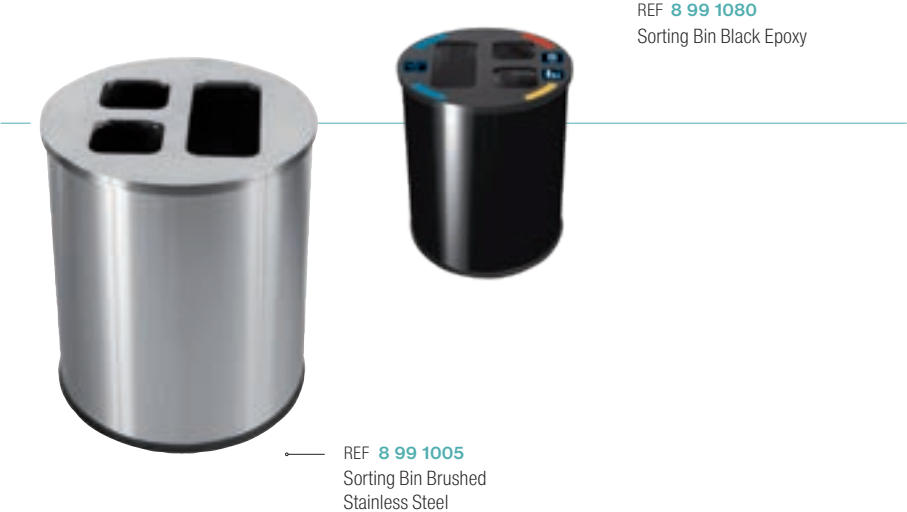
- Robust
- Narrow shape suited to space in a washroom
- Hygienic opening: thanks to a pedal to avoid all direct contact
- Tight waste deposit area
- Easy to clean

CHARACTERISTICS

- Capacity: 20 L (50 L bag)
- Material: polypropylene (for intensive usage)
- Colours: Grey (lid) / White (recovery container)
- Retaining ring for the bag inside the container
- Dim. (10 L): 480 (L) x 415 (H) x 175 (D) mm

COMMON AREA BINS

SORTING BIN



40 LITRES

PRODUCT ADVANTAGES

- Compact sorting solution (offices and bedrooms)
- 3 removable compartments of galvanized steel
- Easy to empty
- Stickers included

CHARACTERISTICS

- Material: painted metal or stainless steel
- Capacity: 40 L
- 2 compartments of 10 L each
- 1 compartments of 20 L
- Colours: Black Epoxy or Brushed Stainless Steel
- Dim.: 335 (Ø) x 470 (H) mm

SORTING BIN



60 LITRES

PRODUCT ADVANTAGES

- Compact sorting solution
- Easy to empty with its 3 removable compartments of galvanized steel
- Stickers included to identify the purpose of each container

CHARACTERISTICS

- Material: painted metal or stainless steel
- Capacity: 60 L
- 2 compartments of 15 L each
- 1 compartments of 30 L
- Colours: Black Epoxy or Brushed Stainless Steel
- Dim.: 355 (Ø) x 670 (H) mm

BATTERY RECYCLING BIN



12 / 37 LITRES

PRODUCT ADVANTAGES

- Silent thanks to padding at the bottom
- Locks with a key (included)
- Stickers included

CHARACTERISTICS

- Material: recyclable plexiglass
- Capacity: 12 or 37 L
- Dim.: (12 L): 250 (Ø) x 250 (H) mm
- Dim.: (37 L): 250 (Ø) x 750 (H) mm
- Opening: 11 x 3.8 cm

COMMON AREA BINS

OPEN DOME SORTING BIN

40 LITRES



REF 8 99 1423
Open Dome Bin
40 L Green



REF 8 99 1427
Open Dome Bin
40 L Red



REF 8 99 1426
Open Dome Bin
40 L Stainless
Steel



REF 8 99 1425
Open Dome Bin
40 L Yellow

REF 8 99 1424
Open Dome Bin
40 L Blue

PRODUCT ADVANTAGES

- Coloured tops to help identify what goes where
- 5 colours: Stainless Steel, Green, Blue, Red and Yellow
- Rubber protection at the base to prevent scratches

CHARACTERISTICS

- Material: outer bin of brushed stainless steel; inner container of galvanized steel
- Removable open dome lid
- Dim.: 350 (Ø) x 740 (H) mm

PUSH BIN

40 LITRES



REF 8 99 538
Push Bin 40 L
Black

REF 8 99 539
Push Bin 40 L
Mirror Stainless Steel



PRACTICAL
GALVANIZED INNER
CONTAINER WITH HANDLE
(INCLUDED)

PRODUCT ADVANTAGES

- Opens and automatically closes with a reinforced push door of polished stainless steel
- Rubber ring at the base to protect against scratching the floor and detergents

CHARACTERISTICS

- Suitable for use indoors and in protected outdoor locations
- Inner container of galvanized metal fitted with a handle
- Capacity: 40 L
- Colour: Black or Mirror Stainless Steel
- Dim.: 345 (Ø) x 785 (H) mm

SORTING STATION

150 LITRES



REF 8 99 1430
Waste Sorting Station
Black



REF 8 99 1431
Waste Sorting Station
Transparent



REF 8 99 1432
Waste Sorting Station
Grey



REF 8 99 1433
Waste Sorting
Station Stainless
Steel

PRODUCT ADVANTAGES

- Refined design for a large capacity sorting solution
- Easy to empty using its 3 inner containers of galvanized steel or its bin bag holders
- Stickers included to identify the purpose of each container

CHARACTERISTICS

- Material: painted epoxy metal (8 99 1430 and 8 99 1432), 201 stainless steel (8 99 1433), metal & acrylic (8 99 1431)
- Capacity: 150 L
- 2 compartments of 40 L each
- 1 compartments of 70 L
- Dim.: 822 (L) x 850 (H) x 452 (D) mm

COMMON AREA BINS

SORTING BIN



Bottles / Cups / Cans
Opening: 10.5 x 10.5 cm



REF 8 99 1102
Sorting Lid Yellow

Bottles / Cups / Cans
Opening: Ø 12 cm



REF 8 99 1100
Sorting Lid Green

Bottles / Cups / Cans
Opening: Ø 12 cm



REF 8 99 1101
Sorting Lid Blue

Paper
Opening: 3 x 23 cm



REF 8 99 1103
Sorting Lid Paper Blue

Other waste

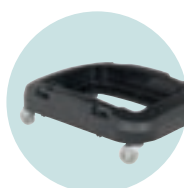


REF 8 99 1099
Sorting Lid Grey

Other waste



REF 8 99 1104
Push Sorting Lid



REF 8 99 1105
Plastic Dolly

PRACTICAL
PLASTIC DOLLY FOR 60 & 80 L
SORTING BINS



SECURE
LOCKING SYSTEM FOR 60 &
80 L SORTING BINS

60 / 80 LITRES

PRODUCT ADVANTAGES



Commercial offer by batch



6 sorting stickers included



Multiple combinations:
The lids are suited to
the waste types

The containers
come in

→ **Contact us**

CHARACTERISTICS

- Material: polypropylene
- Capacity: 60 or 80 L
- Dollies and lid locking systems available for this range of sorting bins
- Dim. (60 L): 320 (L) x 580 (H) x 460 (D) mm
- Dim. (80 L): 320 (L) x 762 (H) x 460 (D) mm
- Dolly: 480 (L) x 15 (H) x 355 (D) mm

Sorting bins

80 L

60 L

+



REF 8 99 1098
Sorting Bin 80 L
without lid

REF 8 99 1097
Sorting Bin 60 L
without lid

KITCHEN BINS

CONTAINER



Container White

30 / 45 / 70 / 90 LITRES

PRODUCT ADVANTAGES

- Comes pre-assembled
- 6 sorting stickers included
- Multiple combinations:
The lids come in

●
●
●
●
●

The containers come in

●
●
●
●

→ [Contact us](#)

CHARACTERISTICS

- Compatible with the HACCP protocol
- Made of polypropylene for intensive usage
- Auto close lid
- On the 90 L model, a ring in front of the pedal reinforces the bin's stability
- Built-in casters (90 L model only)
- Dim. (30 L): 400 (L) x 435 (H) x 410 (D) mm
- Dim. (45 L): 400 (L) x 600 (H) x 410 (D) mm
- Dim. (70 L): 410 (L) x 675 (H) x 500 (D) mm
- Dim. (90 L): 410 (L) x 820 (H) x 500 (D) mm

		90 L	70 L	45 L	30 L
White Lid	○	REF 8 99 618	REF 8 99 1092	REF 8 99 739	REF 8 99 748
Blue Lid	●	REF 8 99 743	REF 8 99 1090	REF 8 99 740	REF 8 99 750
Yellow Lid	●	REF 8 99 744	REF 8 99 1094	REF 8 99 741	REF 8 99 751
Green Lid	●	REF 8 99 745	REF 8 99 1091	REF 8 99 742	REF 8 99 752
Red Lid	●	REF 8 99 777	REF 8 99 1093	REF 8 99 779	REF 8 99 778

PEDAL BIN BAG HOLDER

110 LITRES

REF [8 99 882](#)
Bin Bag Holder
18/0 Stainless
Steel

+ REF [8 99 1075](#)
Bin Bag Holder
304 Stainless
Steel



FITTED
WITH 2 CASTERS AT THE
BACK WITH BRAKES

PRODUCT ADVANTAGES

- Silent foot pedal
- Resistant: 304 stainless steel
- 2 casters at the back to simplify mobility with a breaking system

CHARACTERISTICS

- Comes as a kit: ready to assemble
- Made of stainless steel (18/0 or 304) and rubber
- Reinforced stability with 4 legs
- Assisted opening and closing
- Bag held in place with a rubber band
- Finish: Chrome
- Dim. (8 99 882): 550 (L) x 940 (H) x 425 (D) mm
- Dim. (8 99 1075): 590 (L) x 1000 (H) x 430 (D) mm



ASHTRAYS

ASHTRAYS

JVD's ashtrays are **robust** thanks to their thick walls, treated for **outdoor use** and UV resistant. They are **practical** and easy to empty as they are fitted with inner containers as well as an **anti-vandalism** lock. Each ashtray comes with a **kit to install it** on the wall or in the ground.

WALL-MOUNTED ASHTRAYS

Wall-mounted ashtrays are to be fixed to the wall. Made of painted steel or stainless steel, they are very discreet and work great anywhere thanks to their compact size.



STANDING ASHTRAYS

Standing ashtrays are set up directly on the ground, where they can be fixed or not so they can be moved. Whether made of painted steel or stainless steel, their delicacy adds a touch of elegance to your smoking areas.



FRENCH DECREE 2015-337

In Paris and most other cities and towns in France, the fight for cleanliness has become a priority. As a result, people who drop litter on public roads may receive a €68 ticket. Establishments which are open to the public are therefore motivated to provide solutions: ashtrays, bins and combinations of the two can help contribute to meeting this policy. Additionally, regulations on sidewalk cafés have become stricter. Because of this, many sidewalk café charters have been put in place or updated to compel owners to provide ashtrays to their customers.

ASHTRAYS WITH BINS

Ashtrays with bins can save space while keeping your outdoor areas clean. They allow employees and visitors to throw out waste like cups and packaging.



ASHTRAYS

WALL-MOUNTED ASHTRAYS



REF 8 99 501
Wall-mounted
Ashtray 1.5 L



REF 8 99 502
Wall-mounted
Ashtray 3 L



REF 8 99 1452
Slim Wall-mounted
Ashtray 3 L

REF 8 99 1170
Wall-mounted Ashtray 3 L +
Integrated 14 L Collector

+ REF 8 99 1451
Base and Stand for
Slim Wall-mounted
Ashtray 3 L



ANTI-VANDALISM
KEY LOCKING SYSTEM



**READY TO
INSTALL**
MOUNTING KIT INCLUDED

PRODUCT ADVANTAGES

- Designed for outdoor use
- Protected against the rain
- Fast and easy to empty
- Easy to clean smooth surface

CHARACTERISTICS

- Inner container of galvanized steel
- Galvanized steel and epoxy exterior for better corrosion resistance
- UV-treated coating
- Grained texture to prevent scratching
- Stubbing area made of stainless steel
- Key locking system
- Mounting kit included

Capacities and dimensions:

8 99 501:

- 1.5 L (150 butts with a 0.5 L container)
- 150 (L) x 255 (H) x 60 (D) mm

8 99 502:

- 3 L (300 butts with a 0.5 L container)
- 191 (L) x 355 (H) x 60 (D) mm

8 99 1170:

- 3 L (900 butts) + collector: 14 L
- 300 (L) x 670 (H) x 140 (D) mm

8 99 1452:

- 3 L (900 butts)
- 100 (L) x 500 (H) x 64 (D) mm

8 99 1451:

- 250 (L) x 990 (H) x 200 (D) mm

TOTEM WALL-MOUNTED ASHTRAYS



REF 8 99 1076
Tubular Ashtray Mirror
Stainless Steel 1.7 L
with Protective Roof



REF 8 99 987
Tubular Ashtray
Aluminium 2.4 L

REF 8 99 1002
Tubular Ashtray Mirror
Stainless Steel 1.8 L

REF 8 99 1000
Tubular Ashtray
Aluminium 3.4 L



PRACTICAL
EASY TO EMPTY

PRODUCT ADVANTAGES

- Designed for protected outdoor use
- Very attractive with a brushed or shiny finish
- Fast and easy to install
- Fire resistant

CHARACTERISTICS

Material:

- Brushed aluminium: 8 99 987 & 8 99 1000
- Shiny stainless steel: 8 99 1002 & 8 99 1076
- Key locking system
- Mounting kit included

Capacities and dimensions:

8 99 1002:

- Ashtray 1.8 L (540 butts)
- 76 (Ø) x 460 (H) mm

8 99 1076:

- Ashtray 1.7 L (510 butts)
- 76 (Ø) x 460 (H) mm

8 99 987:

- Ashtray 2.4 L (720 butts)
- 80 (Ø) x 480 (H) mm

8 99 1000:

- Ashtray 3.4 L (1,020 butts)
- 80 (Ø) x 680 (H) mm

ASHTRAYS

ASHTRAYS WITH BINS



REF 8 99 1082
Ashtray 4.7 L and
Container 48 L



REF 8 99 615
Ashtray 2 L and
Container 8 L

REF 8 99 1062
Ashtray 3 L and
Container 29 L



PRACTICAL
ROBUST, EASY TO EMPTY
GALVANIZED INNER CONTAINER

PRODUCT ADVANTAGES

- Designed for outdoor use
- Protected against bad weather
- Fast and easy to empty

CHARACTERISTICS

- Material: galvanized steel (rust and corrosion resistant)
- UV-treated coating
- Inner container of galvanized steel
- Stubbing area made of stainless steel
- Possibility of fixing to the ground
- Key locking system
- Ground fixing kit included
- Colour: Charcoal Grey

Capacities and dimensions:

8 99 1062:

- Ashtray 3 L (900 butts) + container 29 L
- 300 (L) x 990 (H) x 250 (D) mm

8 99 1082:

- Ashtray 4.7 L (1,400 butts) + container 48 L
- 480 (L) x 990 (H) x 250 (D) mm

8 99 615:

- Ashtray 2 L (600 butts) + container 8 L
- 400 (L) x 1040 (H) x 260 (D) mm

ASHTRAYS WITH BINS



REF 8 99 1171
Ashtray 3.3 L and
Container 24 L



REF 8 99 1172
Ashtray 5.9 L and
Container 43 L

REF 8 99 1008
Ashtray 2.3 L and
Container 20 L



PRACTICAL
GALVANIZED INNER CONTAINER
ROBUST AND EASY TO EMPTY

PRODUCT ADVANTAGES

- Designed for outdoor use
- Protected against bad weather
- Fast and easy to empty
- Smooth, easy to clean surfaces

CHARACTERISTICS

- Material: galvanized steel (rust and corrosion resistant)
- UV-treated coating
- Key locking system
- Ground fixing kit included
- Colour: Charcoal Grey

Capacities and dimensions:

8 99 1008:

- Ashtray 2.3 L (690 butts) + container 20 L
- 330 (L) x 895 (H) x 280 (D) mm

8 99 1171:

- Ashtray 3.3 L (1,000 butts) + container 24 L
- 300 (L) x 960 (H) x 250 (D) mm

8 99 1172:

- Ashtray 5.9 L (1,800 butts) + container 43 L
- 480 (L) x 960 (H) x 250 (D) mm

ASHTRAYS

TOTEM RECTANGULAR ASHTRAY



REF 8 99 503
Standing Ashtray 12.5 L



ROBUST
GALVANIZED INNER CONTAINER

PRODUCT ADVANTAGES

- Designed for outdoor use
- Protected against the rain
- Fast and easy to empty
- Easy to clean smooth surface

CHARACTERISTICS

- Inner container of galvanized steel
 - Stubbing area made of stainless steel (2 openings)
 - Galvanized steel and epoxy exterior for better corrosion resistance
 - UV-treated coating
 - Key locking system
 - Ground fixing kit (screws and bolts) included
 - Weighted base to ensure stability (7.4 kg)
- Capacities and dimensions:**
- 2.5 L (3,750 butts)
 - 400 (L) x 1040 (H) x 400 (D) mm

TOTEM TUBULAR ASHTRAY



REF 8 99 616
Tubular Standing Ashtray 3 L



ROBUST
GALVANIZED INNER CONTAINER

PRODUCT ADVANTAGES

- Designed for outdoor use
- Fully galvanized, resistant to bad weather and UV rays
- Fast and easy to empty (container accessible from above)

CHARACTERISTICS

- Inner container of galvanized steel
 - Stubbing area made of stainless steel (4 openings)
 - Galvanized steel and epoxy exterior for better corrosion resistance
 - UV-treated coating
 - Ground fixing kit (screws and bolts) included
 - Weighted base to ensure stability (6.5 kg)
- Capacities and dimensions:**
- 3 L (900 butts)
 - 300 (Ø) x 1080 (H) mm

TOTEM TUBULAR STAINLESS STEEL ASHTRAY



REF 8 99 1079
Tubular Ashtray Mirror Stainless Steel 1.4 L on Stand



REF 8 99 1003
Tubular Ashtray Mirror Stainless Steel 1.1 L on Stand with Protective Roof



REF 8 99 1001
Tubular Ashtray Mirror Aluminium 4.5 L on Stand



PRACTICAL
2 DIFFERENT EMPTYING SYSTEMS

PRODUCT ADVANTAGES

- Designed for outdoor use
- Very attractive with a brushed or shiny finish
- Possibility of fixing to the ground

CHARACTERISTICS

- Colours and materials:**
- Brushed aluminium: 8 99 1001
 - Shiny 304 stainless steel: 8 99 1079 & 8 99 1003
 - Ground fixing kit (screws and bolts) included
- Capacities and dimensions:**
- 8 99 1001: 4.5 L (1,350 butts) / 80 (Ø) x 900 (H) mm
 - 8 99 1079: 1.4 L (320 butts) / 76 (Ø) x 920 (H) mm
 - 8 99 1003: 1.1 L (330 butts) / 76 (Ø) x 920 (H) mm

A black and white photograph of a chef in a kitchen, looking down at his work. He is wearing a white chef's coat and a tall hat. The background is blurred, showing kitchen equipment and lights. A teal-colored rectangular overlay is on the right side of the image.

FLYING INSECT KILLERS

FLYING INSECT KILLERS

For areas where food is prepared and/or handed over to consumers, Article 3 of the French order of 28 May 1997 and Article 3 of the order of 9 May 1995 specify that those areas must be free from any risk of contamination and define the obligation for protection against the presence of insect pests.

WHICH INSECTS?

Flying insect killers are designed to attract and kill flying insects, particularly flies and mosquitoes but also midges, wasps, hornets, horseflies and more.

WHERE SHOULD YOU INSTALL IT?

For optimal operation, your flying insect killer must be placed in a warm, dark place, sheltered from draughts and up in the air (whether mounted or hanging).



OPERATING PRINCIPLE

A flying insect killer is an illuminated electrical device which attracts flying insects with ultraviolet A rays (harmless to people) and then either electrocutes them, traps them with glue or aspirates them.

GLUE OR ZAPPER?

Bug zappers are non-polluting (no chemicals and no odours). They are safe (the high-voltage grids are always protected). Their recovery trays need to be emptied.

Glue traps are non-polluting (no chemicals and no odours). They are safe. They do not cause any crackling or throw off any insect parts. They are perfectly suited to places with significant hygiene constraints. Their glue strips need to be replaced on a regular basis.

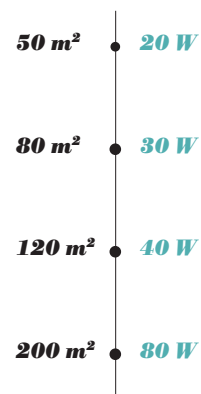
IP54 INDEX DEVICES?

IP54 devices are suitable for **very humid environments**. They are protected against sprays of water.

FRAGMENT RETENTION TUBES?

Unlike standard tubes, fragment retention tubes are covered with a **protective film** which avoids broken glass in the case of a blow. Fragment retention tubes are recommended for the agrifood industry in particular.

WHAT POWER FOR WHAT SURFACE AREA?



INDUSTRIE PRO IP54

MADE IN FRANCE

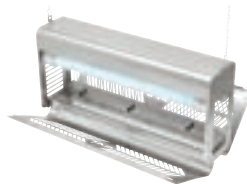


APPROXIMATE PROTECTED AREA

80 W = 200 m²

+ REF 2 20 0340

Fragment Retention Tube 40 W



REF 8 55 1174

Industrie Pro IP54
Bug Zapper 80 W
Fragment Retention

PRODUCT ADVANTAGES

- Robust
- Suitable for humid environments: IP54
- Hang, place on a surface or mount on a wall
- Covers a large area
- Automatically shuts off when the grid is opened
- Standard fragment retention tubes

CHARACTERISTICS

- Power supply: 230 V - 50 Hz
- Grid voltage and intensity: 3700 V - 9 mA
- Rated power: 60-100 W max
- 304L stainless steel
- Class I
- IP54
- 2 tubes included per device
- 2 year warranty
- Dim.: 630 (L) x 300 (H) x 155 (D) mm

INDUSTRIE

MADE IN FRANCE



APPROXIMATE PROTECTED AREA

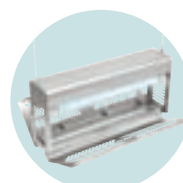
40 W = 120 m²
80 W = 200 m²REF 8 55 837
Industrie Bug Zapper 40 WREF 8 55 837 TAE
Industrie Bug Zapper 40 W
Fragment Retention TubesREF 8 55 838
Industrie Bug Zapper 80 WREF 8 55 838 TAE
Industrie Bug Zapper 80 W
Fragment Retention TubesREF 8 55 839
Industrie Glue Trap 80 WREF 8 55 839 TAE
Industrie Glue Trap 80 W
Fragment Retention Tubes

PRODUCT ADVANTAGES

- Robust
- Hang from the ceiling or mount on a wall
- Automatically shuts off when the grid is opened

CHARACTERISTICS

- Power supply: 230 V - 50 Hz
- Grid voltage and intensity: 3700 V - 9 mA
- Rated power: 60-100 W max
- 304L stainless steel
- Class I
- IP20
- 2 tubes included per device
- 2 year warranty
- Dim.: 617 (L) x 280 (H) x 110 (D) mm

+ REF 2 20 0338
Tube 20 W
(for 855837)REF 2 20 0089
Fragment Retention Tube 20 W
(for 855837)REF 2 20 0339
Tube 40 W
(for 855838)REF 2 20 0340
Fragment Retention Tube 40 W
(for 855838)REF 2 20 0339
Tube 40 W
(for 855839)REF 2 20 0340
Fragment Retention Tube 40 W
(for 855839)REF 8 88 840
Glue Strips 175 x 610 mm (pack of 6)PRACTICAL
OPENING SYSTEM MAKES IT
EASY TO CLEAN

STANDARD RANGE

FLYING INSECT KILLERS

À LED

NEW



REF 8 55 1598
LED Bug Zapper

**APPROXIMATE
PROTECTED
AREA**
80 m²

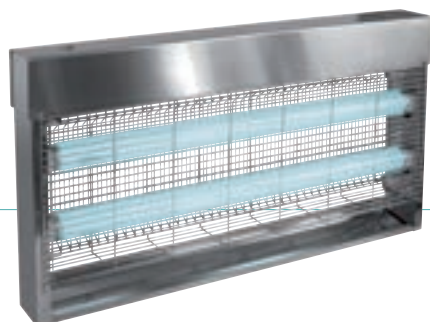
PRODUCT ADVANTAGES

- Low energy consumption
- Very long life LED bulb
- Open 360° for maximum attraction

CHARACTERISTICS

- Power supply: 220-240 V - 50-60 Hz
- Power: 13 W
- Class II
- Bulb type: LED
- Open 360°
- Place on the ground or hang
- Easy to clean insect recovery tray
- IP24
- Material: heat resistant ABS
- Voltage on the grid: 4000 V
- Dim. 475 (L) x 270 (D) x 105 (H) mm

STANDARD



**APPROXIMATE
PROTECTED
AREA**
30 W = 80 m²
40 W = 120 m²
80 W = 200 m²

BUG ZAPPER

SPARE BULB

	STANDARD	FRAGMENT RETENTION	STANDARD	FRAGMENT RETENTION
30 W	REF 8 55 625	REF 8 55 626	REF 2 20 0639	REF 2 20 0781
40 W	REF 8 55 627	REF 8 55 628	REF 2 20 0338	REF 2 20 0089
80 W	REF 8 55 629	REF 8 55 630	REF 2 20 0339	REF 2 20 0340

PRODUCT ADVANTAGES

- Hang from ceiling
- On/off switch

CHARACTERISTICS

- Power supply: 230 V - 50 Hz
- 3 powers:
2 x 15 W
2 x 20 W
2 x 40 W
- Grid voltage and intensity: 3800 V - 10 mA
- Power cord with plug (95 cm)
- Class I
- IP20
- 2 tubes included per device
- 2 year warranty
- Dim. 30 W: 515 (L) x 325 (H) x 70 (D) mm
- Dim. 40 & 80 W: 660 (L) x 365 (H) x 70 (D) mm

À GLUE 30 W



REF 8 55 524
Glue Trap

REF 8 55 594
Glue Trap
Fragment
Retention Bulbs

REF 8 88 525
Glue Strips
460 x 295 mm
(pack of 10)

+ REF 2 20 0639
Tube 15 W
(for 855524)

REF 2 20 0781
Fragment Retention
Tube 15 W
(for 855594)

**APPROXIMATE
PROTECTED
AREA**
30 W = 80 m²

PRODUCT ADVANTAGES

- Place on a surface or mount on a wall
- Compact size makes it easy to move

CHARACTERISTICS

- Power supply: 230 V - 50 Hz
- Power: 30 W
- Fuse accessible from the exterior
- Glossy white steel
- Power cord with plug (1.8 m)
- Class I
- IP20
- 2 tubes included per device
- 2 year warranty
- Dim.: 465 (L) x 285 (H) x 95 (D) mm

DÉCO GLUE TRAP 20 W

MADE IN FRANCE



REF 8 55 1292
Deco Glue Trap 20 W
Black



REF 8 55 1293
Deco Glue Trap 20 W
Red



REF 8 55 1291
Deco Glue Trap 20 W
White

**APPROXIMATE
PROTECTED
AREA**

20 W = 50 m²

+ REF 2 20 1887
E14 Screw Tube Bulb

+ REF 8 88 1294
Glue Strips
(pack of 6)

PRODUCT ADVANTAGES

- Professional model
- Cost-effective
- Hang, place on a surface or mount on a wall

CHARACTERISTICS

- Power supply: 230 V - 50 Hz
- Power cord with plug (1.4 m)
- Class I - IP20
- Meets HACCP requirements
- Easy to change bulb
- 1 bulb included (20 W)
- 2 year warranty
- Dim.: 165 (L) x 265 (H) x 113 (D) mm

COMPACT BUG ZAPPER 20 W

MADE IN FRANCE



REF 8 55 1327
Compact II Bug Zapper
20 W Black



REF 8 55 1328
Compact II Bug Zapper
20 W Red



REF 8 55 1326
Compact II Bug Zapper
20 W White

**APPROXIMATE
PROTECTED
AREA**

20 W = 60 m²

+ REF 2 20 1887
E14 Screw Tube Bulb

PRODUCT ADVANTAGES

- Model for small spaces
- Decorative design
- Hang, place on a surface or mount on a wall

CHARACTERISTICS

- Power supply: 230 V - 50 Hz
- Grid voltage and intensity: 3000 V - 5 mA
- Glossy black, white or red steel
- Power cord with plug (1 m)
- Class I - IP20
- 1 bulb included (20 W)
- 2 year warranty
- Dim.: 160 (L) x 270 (H) x 130 (D) mm

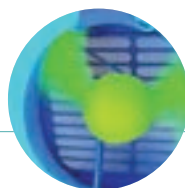
DESINSECTOR 30 W

MADE IN FRANCE



REF 8 55 1360
Desinsector
(1 speed)

REF 8 55 1361
Desinsector
(2 speeds)



**APPROXIMATE
PROTECTED
AREA**

30 W = 40 m²

+ REF 2 20 2098
Desinsector Tube

INNOVATION
WITH NO GLUE OR ELECTRIC GRID,
THE DESINSECTOR ASPIRATES
INSECTS INTO ITS TRAP

PRODUCT ADVANTAGES

- Hygienic: no insect parts thrown off
- Eco-friendly: no chemical substances

CHARACTERISTICS

- Power supply: 230 V - 50 Hz
- Plastic cover
- Class I - IP20
- 1 tube included (30 W)
- 2 year warranty
- Dim.: 245 (L) x 340 (H) x 220 (D) mm

COMMERCE BUG ZAPPER 30 W



REF 8 55 078
Professional Bug
Zapper 30 W

+ REF 5 20 0337
Tube 15 W
(for 855078)

**APPROXIMATE
PROTECTED
AREA**

30 W = 80 m²

PRODUCT ADVANTAGES

- Price-quality ratio

CHARACTERISTICS

- Power supply: 230 V - 50 Hz
- Plastic cover
- Class I - IP20
- 2 tubes included (15 W)
- 2 year warranty
- Dim.: 350 (L) x 230 (H) x 150 (D) mm



- 1 • **Trains** - IEP
- 2 • **Airports** - Palma de Mallorca
- 3 • **Restaurants** - McDonald's
- 4 • **Hotels** - Marina Bay Sands Hotel - Singapore
- 5 • **Stadiums** - Bordeaux
- 6 • **Shopping centres** - El Corte Inglés

SOME OF OUR CLIENTS AROUND THE WORLD



Because we respect the environment, JVD prints this catalogue using plant-based inks on eco-friendly paper from sustainably managed forests. JVD invites our partners and clients to send us your email address so we can transmit this information to you directly in electronic form.

Non-binding document. JVD reserves the right to modify our products' characteristics without notice. French business registration no.: RCS 330 927 476.

Production: Liner Communication - Nantes - Printing: Imprimerie Vincent - Photos: Vue d'Ouest - Yves Blond - Jean-Claude Leveau - Eleven DR. Photos taken in a Porcelanosa showroom.

JVD SAS

3 rue des Brèches
44406 Rezé Cedex, France
Tel. +33 (0)2 40 75 98 20
Fax +33 (0)2 40 75 01 23
jvd.fr

France Sales Department

Tel. + 33 (0)2 44 76 51 56
jvdfrance@jvd.fr

Export Sales Department

Tel. + 33 (0)2 40 75 99 76/77
Fax + 33 (0)2 40 75 56 70/76
jvdexport@jvd.fr

Customer Service

Tel. +33 (0)2 40 75 96 30
sav@jvd.fr

JVD Asia

56 Loyang Way #06-04 - Loyang Enterprise Building -
Singapore 508775
Tel. + 65 6214 8550
Fax + 65 6542 7533
jvd.com.sg
jvdasia@singnet.com.sg

JVD España

Calle Juan de Herrera 14, Elche Parque Industrial
03203 Elche, Alicante, Spain
Tel. + 34 965 677 777
Fax + 34 965 663 721
jvd.es

JVD Americas

Conjunto Quadrum, Acceso III, No. 16A, Int. 15A
Oro. Parque Industrial Benito Juárez
C.P. 76120 Santiago de Querétaro, Mexico
Tel: + 52 442 161 2595

Your distributor's stamp



THE FRENCH TOUCH